

# **IBM Copyright Permission #22527**

**Reprint Courtesy of International Business Machines Corporation, © 1994  
International Business Machines Corporation'**

**INTERNATIONAL BUSINESS MACHINES CORPORATION (IBM) ARMONK, NEW YORK 10504**

## **PERMISSION TO REPRINT/POST IBM COPYRIGHTED PUBLICATIONS**

The material owned by IBM must be accompanied by the following credit line: **"Reprint Courtesy of International Business Machines Corporation, © [Year] International Business Machines Corporation"**. The credit line normally should appear on the page where the posting appears, either under the title or as a footnote. If the foregoing is inconvenient, the credit line may be placed in a conveniently viewable manner with suitable reference to the places where the material appears.

It is the understanding of **International Business Machines Corporation** that the purpose for which its material is being reproduced is accurate and true as stated in the original request.

Permission to quote from, transmit electronically or reprint/post IBM material is limited to the purpose and quantities originally requested and must not be construed as a blanket license to use the material for other purposes or to reproduce other IBM copyrighted material.

IBM reserves the right to withdraw permission to reproduce copyrighted material whenever, in its discretion, it feels that the privilege of reproducing its material is being used in a way detrimental to its interest or the above instructions are not being followed properly to protect its copyright.

No permission is granted to use trademarks of **International Business Machines Corporation** and its affiliates apart from the incidental appearance of such trademarks in the titles, text, and illustrations of the named publications. Any proposed use of trademarks apart from such incidental appearance requires separate approval in writing and ordinarily cannot be given. The use of any IBM trademark should not be of a manner which might cause confusion of origin or appear to endorse non-IBM products.

**THIS PERMISSION IS PROVIDED WITHOUT WARRANTY OF ANY KIND, EITHER EXPRESSED OR IMPLIED, INCLUDING BUT NOT LIMITED TO IMPLIED WARRANTIES OF MERCHANTABILITY AND FITNESS FOR A PARTICULAR PURPOSE.**

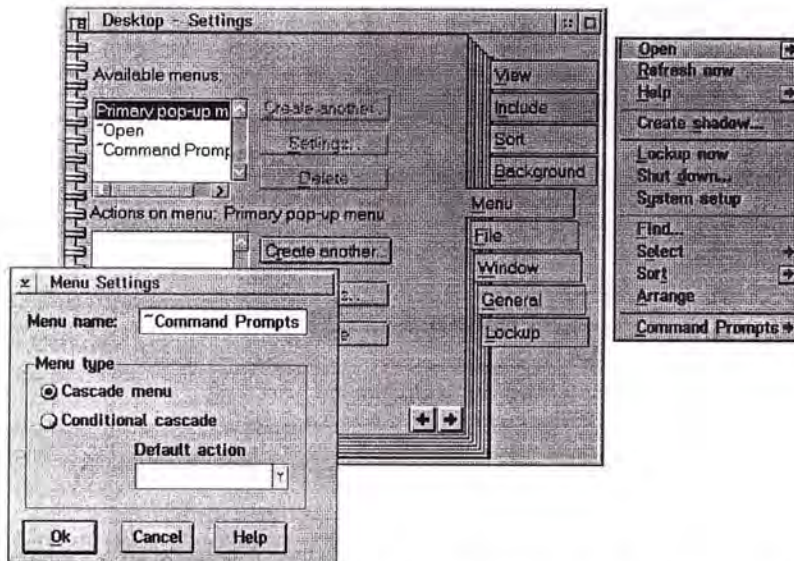
**INTERNATIONAL BUSINESS MACHINES CORPORATION**

**Dated: April 22, 2014**

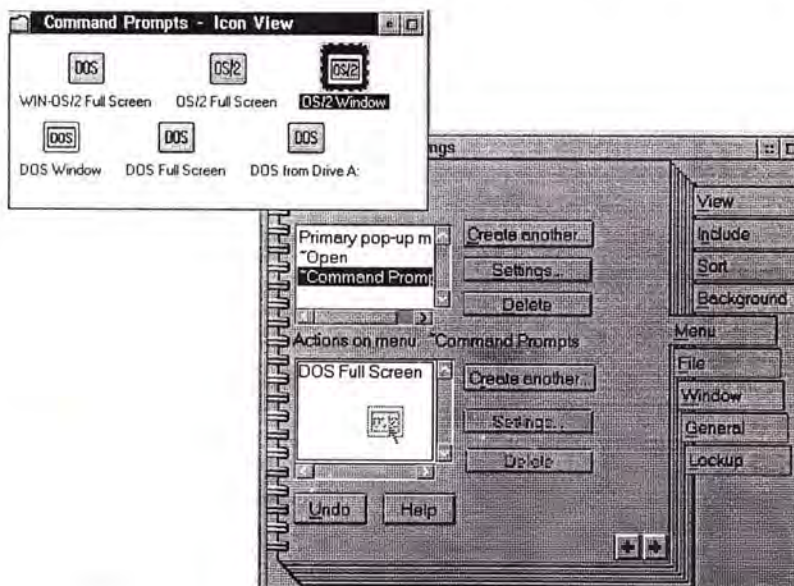
## Changing the Desktop Context Menu

Let's add commands to the desktop context menu so that we can bring up an OS/2 window simply by clicking right on the desktop and typing the number 2 (for OS/2...). First we will add a new item "Command Prompts" and then we will cascade off with "OS/2 Window" and "Dos Full Screen".

Click right on the desktop and open the settings. Under Menu Available menus select "Create another...". In the Menu Settings dialog specify "Command Prompts" and select Cascade menu. The results are shown below.



Open OS/2 System Command Prompts and drag "Dos Full Screen" and "OS/2 Window" into the Actions on menu: ~Command Prompts list:



Now select "OS/2 Window" in Actions on menu: ~Command Prompts and push the Settings... button for Actions on menu. . Put a tilde (a "~") just before the 2 of OS/2 in Menu Item Name. The result will be that the 2 becomes a mnemonic and if you click right on the desktop and type "2" you will bring up an OS/2 window. Close Desktop - Settings and test.

