



Radix Reload Quick Guide

Quick Installation Guide

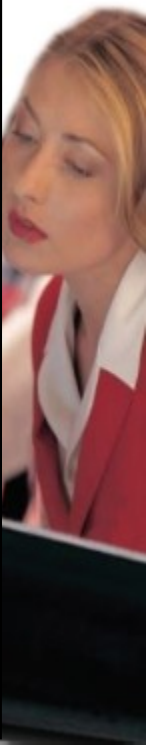
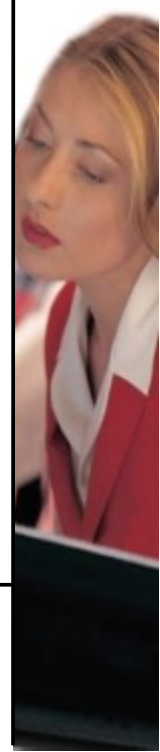


Table of Contents

Abstract.....	2
Radix Reload Introduction.....	3
Radix Reload Package.....	4
Minimum Requirements.....	4
Before installation.....	4
Installation.....	5
Recommended Snapshot Configuration.....	6
Activating Radix Reload.....	7
Document information.....	8
Contact information.....	8

Abstract

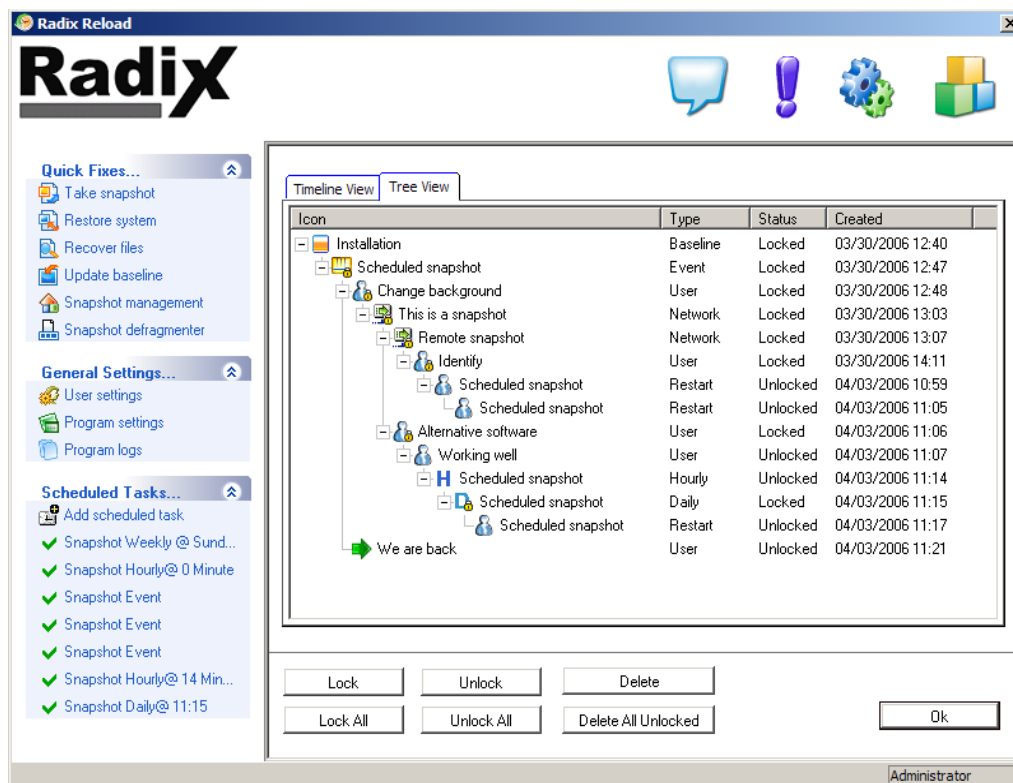
Radix Reload Quick Installation Guide aims to give users a quick set of instructions on typical Reload installation process and **recommended Reload configurations**, suitable for most users.



Radix Reload Introduction

Radix Reload is a revolutionary solution that prevents business interruptions and data loss. The Reload is primarily designed for IT administrators who are faced with the constant pressure of running complex systems, and for users whose computer failures have negative impact on productivity, and waiting hours for IT engineers to bring their computers back to working condition is not an option.

The Reload prevents business downtime and eliminates failures and losses arising from user errors, bad update patches, system crashes, lost data, new viruses and other threats penetrating security or transmitted by users portable storage devices.



Radix Reload Package

Radix Reload can be obtained either by downloading a zip packed package from the Internet , or from a distributed installation CD. In both cases. The package contains the following items:

- Setup files
- Package Builder
- Radix Reload + Package Builder Help files
- Command line Generator
- Backup Image CAB file for WinPE
- Remote Management Server setup

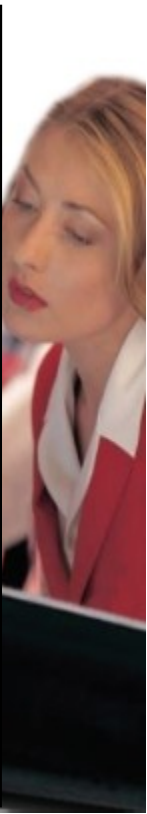
Minimum Requirements

- Pentium III or newer
- Minimum 128MB RAM
- Windows 2000, XP, 2003, Vista
- Minimum 10GB HDD (protects only the first physical HDD)
- No HDD Compression
- No HDD Encryption

Before installation

Before installing Radix Reload, make sure that you either meet the following conditions, or take the following measures before installing Radix Reload

- **Free space:**
Verify that every partition future to be protected has at least 2GB of free space.
- Run the Windows **Defragmentation** program
- Run the Windows **Scandisk** Program



Installation

To start the installation, double click the Setup.exe file or select the proper icon on the Autorun menu. Follow the on-screen messages that will guide you during the installation.

During installation, you will be prompt to enter the installation code. This code is a 36 digit unique ID, that will enable you to later on activate Radix Reload. If you do not have a code, click on the "Demo" button and a 30 days trial code will appear. You may also purchase a copy of Radix Reload and receive a "live" code ready for activation.

You may choose from 3 different installation types:

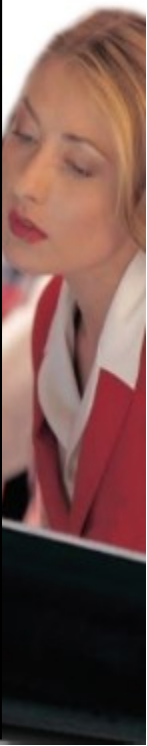
Typical – Recommended. This will set the protection only to drive C:\ and not set access control.

Custom – This will enable you to chose which drive to protect and weather or not to enable access control.

Advanced – install using pre-configurd parameters, see the **Radix Reload Package builder** help file for more information.

Note: All settings can later on be changes or reset except **partition protection**. You will not be able to protect or remove protection from a specific partition once installed.

After Windows part of the installation, Radix Reload will automatically install the subsystem during first restart. After the subsystem is installed, Radix Reload installation will be completed.



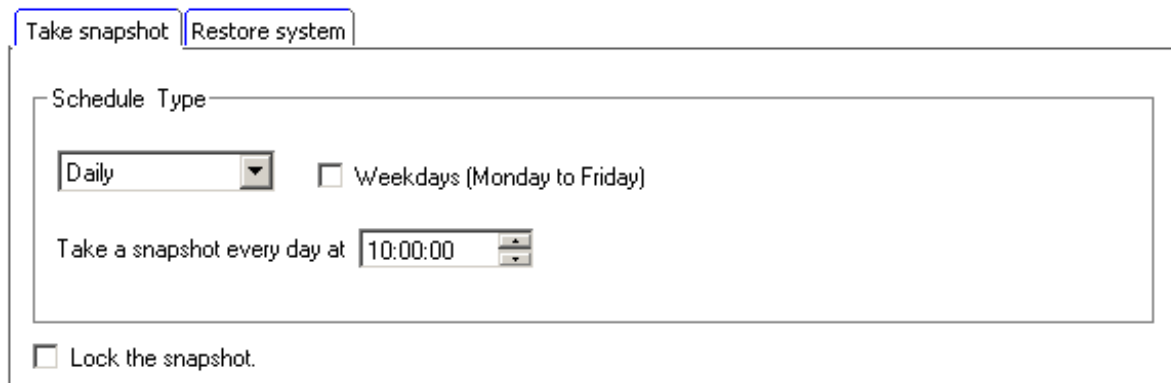
Recommended Snapshot Configuration

After installation is completed, it is very important to configure the system so it will meet your needs, the configuration is done in the **Radix Settings** screens or the first run Wizard.

Most important configuration is the snapshot taking and management. It is important to set a proper sequence for snapshot taking and snapshot deletion:

Snapshot taking

Set Radix Reload to take a snapshot every day at 10:00 AM, about the beginning of every working day.



Take snapshot | Restore system

Schedule Type

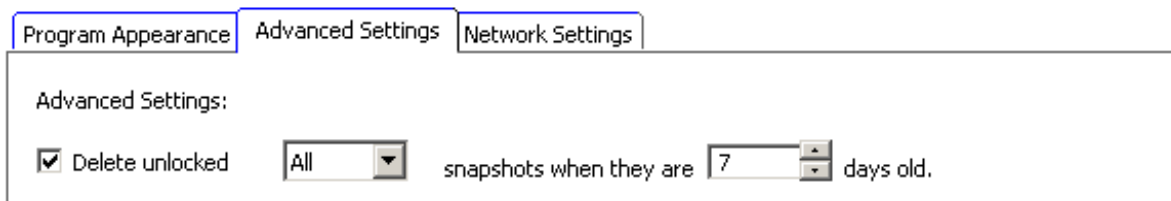
Daily ☐ Weekdays (Monday to Friday)

Take a snapshot every day at 10:00:00

☐ Lock the snapshot.

Snapshot delete

Set Radix Reload to delete all snapshots that are 7 days old.

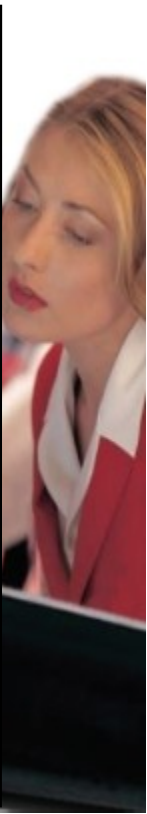


Program Appearance | Advanced Settings | Network Settings

Advanced Settings:

☒ Delete unlocked All snapshots when they are 7 days old.

This way, you will have a constant flow of up-to-date snapshots that are most relevant (Plus the baseline point)



Activating Radix Reload

Radix Reload may work normally without activating the installed copy for a pre-determined period of time, after-which the copy will expire. If you decide to purchase Radix Reload, or you are installing a copy you already purchased, you will need to activate your copy in order for it not to expire.

There are two ways of doing that:

Online – Over the Internet:

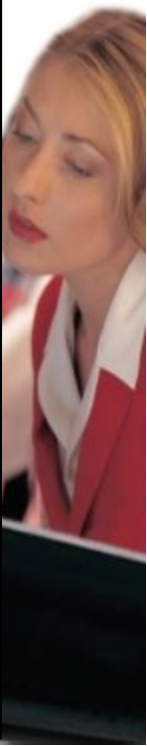
Offline – Over the phone or Fax message

To launch the activation sequence, right click the Reload tray icon and select "About", then click "activate" and follow the on-screen instructions. After activating Reload, you must reboot the computer.



"...Radix puts the fun back into experimenting with new drivers or programs. You need no longer fear ruining your Windows. Simply select a restore point (snapshot) in the Radix menu and - voilà! - the system is as good as new..."

Siggy Moerch, Toms Hardware Guide.



Document information

Version: 1.04
Classification: Release
History: -
Authors : David M.
References: Radix Reload Users Guide
Radix Reload Introduction documents
Radix Reload white papers

Contact information

Radix Technologies Ltd.
Hagefen 126 Hemed, 50295
Israel

Tel: +972-3-9606350
Web: www.radix-int.com
Email: info@radix-int.com

