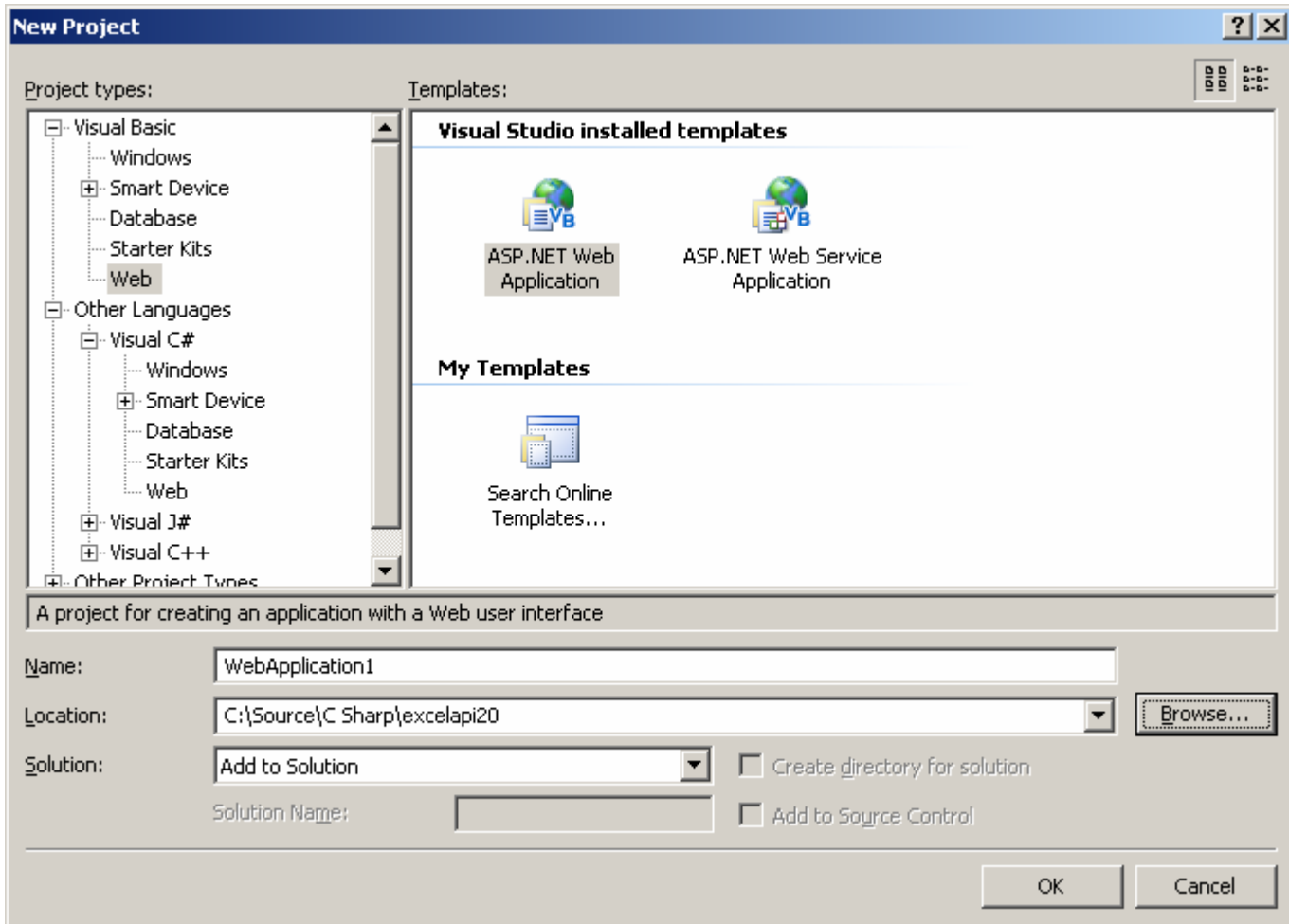
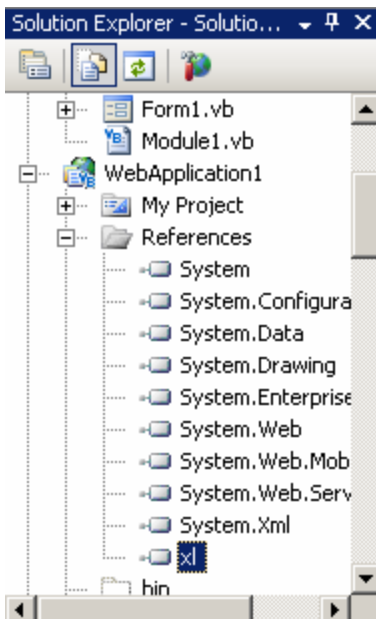


How to Use Excel API .NET with ASP .NET

1. Open Visual Studio .NET, from the File Menu select New > Project...
2. Create an ASP .NET Web Application and click the OK button.



3. Add the Excel API .NET reference to your project. The file name is XL.DLL and is located in folder \excelapi_demo\LIB



4. Double-click on the form in Design View and add the following Imports statement (highlighted in yellow) just before the Class statement:

```
Imports SkySof.xl
```

```
Partial Public Class _Default  
    Inherits System.Web.UI.Page
```

5. Add the following code to the Page_Load subroutine:

```
Protected Sub Page_Load(ByVal sender As Object, ByVal e As System.EventArgs) Handles Me.Load  
    Dim w As Workbook  
  
    'open the Excel workbook  
    'change this if necessary to point to a valid file  
    w = Workbook.getWorkbook("C:\excelapi_demo\VB Test\bin\demo.xls")  
  
    'Create Styled HTML Table  
    'Note that tags </HEAD> and <BODY> are produced within  
    'method CreateStyledHtmlTable()  
    Dim html As New util.Html(w, 0, "a1:c9", True, True, False, False)  
    Dim st As String  
    st = "<HTML>" & vbCrLf & "<HEAD><CENTER><STRONG>Excel API .NET Demo</STRONG></CENTER>"  
    st = st & "<TITLE>Excel API .NET Demo</TITLE><BR>" & vbCrLf  
    st = st & html.CreateStyledHtmlTable()  
    st = st & "</BODY>" & vbCrLf & "</HTML>"  
    Response.Write(st)  
    Response.End()  
  
End Sub
```

6. Press the F5 key to run the web application. If you used file DEMO.XLS provided with the Excel API .NET download your results should look similar to this:

	A	B	C
1	apple	200.000 %	7/2/08 16:30
2	orange	\$3.20	14-Feb-2008
3	lime	\$4.0000	4/15/08 4:30 PM
4	grape	3.55E+00	January 2, 2008
5	banana	(\$4.22)	12-Jan-2008
6	mango	(5.21)	02-Jan-08
7	http://www.microsoft.com	3.32	john.doe@yahoo.com
8		TRUE	FALSE
9	this is wrapped text. This is wrapped text.	\$4.6	374-23-1243