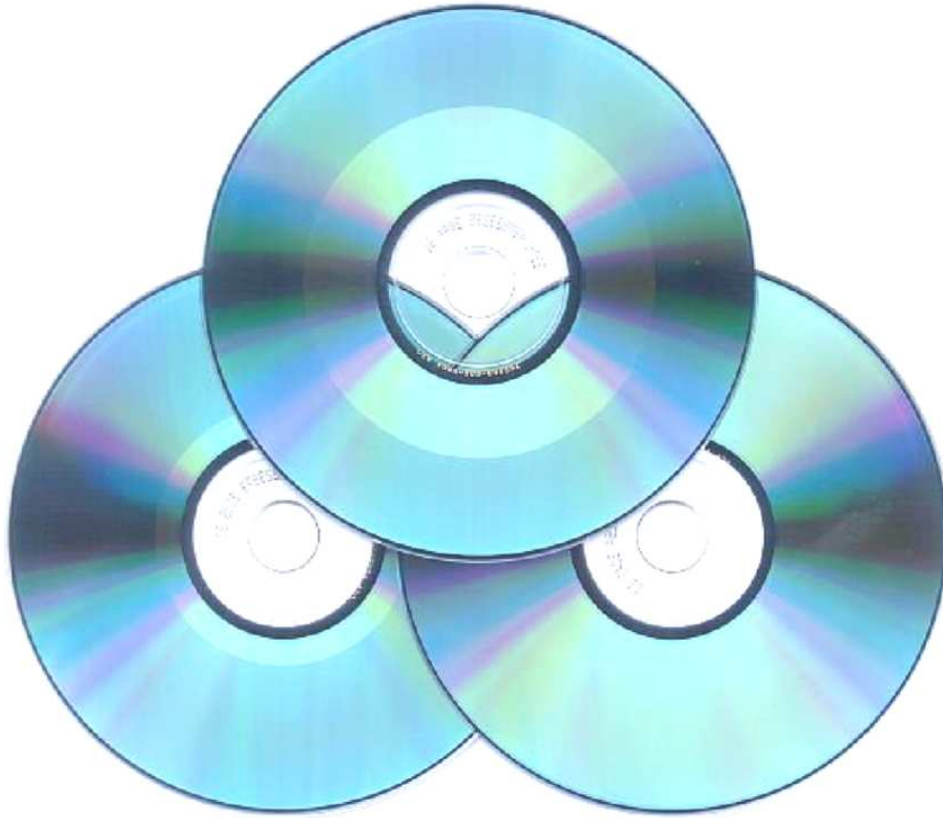


WELCOME TO GUI CDRWSEL



GUI for RSJ & DVDDAO

WELCOME TO GUI CDRWSEL

P1/ Prerequisites	P4
RSJ support	P4
DVDDAO support	P4
Other :	P4
P2/ CDRWSEL installation	P4
INSCDRW	P4
P3/ CDRWSEL Start parameters	P6
1 / CDRWSEL Welcome panel	P7
2 / CDRWSEL customization/settings	P8
Setup	P9
Help	P9
Vpaths	P9
3 / CDRWSEL INI parameters	P10
4 / CDRWSEL Main Appl Window	P11
4.1 V1 Windows / RSJ + DVDDAO	P12
4.2 V1 Windows / DVDDAO only	P12
4.3 Windows	P13
4.4 J Windows	P13
5 / Main window options	P14
5.1 CDRWSEL integrated filemanager	P14
5.2 PID's	P15
5.3 Add/Del HD	P15
6 / RSJ (CDWFS)	P16
6.1 RSJ ini parameters	P16
6.2 RSJ ATTACH	P17
6.3 RSJ Special attach message	P17
6.4 RSJ Finalyze	P18
6.5 RSJ CD-View	P19
<i>Open RSJ CD_view window</i>	P19
<i>Create CD from ISO or TRK file</i>	P19
<i>Create CD audio from WAV files</i>	P20
<i>Create CD audio from MP3 files</i>	P21
<i>Extented track copy fontions (trkcopy)</i>	P22
<i>Convert Trk to Iso</i>	P22
<i>Create CD/DvD using Cdcopy</i>	P22
7 / DVDDAO	P24
7.1 DVDDAO ini parameters	P24
7.2 DVDDAO main dialog options	P25
7.3 DVD/BD-R(E) to DVD/BD-R(E) or CD/DVD/BD-R(E) to ISO/IMG file	P27
7.4 Create a VIDEO DVD	P28
<i>Optionnal settings not all used for video dvd/bd</i>	P28
<i>Prepare the new video DVD (project) from existing VIDEO_TS on your HD</i>	P28
<i>Prepare the new video folder (project) from video files (e.g. avi or mpg)</i>	P28
<i>Verify and Burn Video project</i>	P29
7.5 Create a DATA DVD/BD	P29
<i>Optionnal settings not all used for video dvd/bd</i>	P29
<i>Prepare the new data DVD/BD (project)</i>	P29
7.6 Create an ISO file using Mkisofs	P31
<i>Main mkisofs (only) dialog - Step 1</i>	P31
<i>Step 2</i>	P31
7.7 How to save/restore a personnal project	P32

WELCOME TO GUI CDRWSEL

<i>From main dvddao (project window)</i>	P32
<i>CDRWSel request</i>	P32
<i>Project list format</i>	P32
7.8 MKisofs	P33
7.9 CDRWSEL ffmpeg	P34
7.10 CDRWSe DVDAUTHOR	P35
7.11 Burning a BD-RE	P36

WELCOME TO GUI CDRWSEL

P1 / Prerequisites

Optimized for 1024 x 768 screen size

Lowest screen resolution : 800 x 600 (Main menu smart icon not enabled, mkisofs ini not ok yet)

Highest screen resolution : Ok (I'm now under screen resolution of 1680x1050)

RSJ support (optionnal):

RSJ V3 or higher from (<http://www.rsj.de>)

DVDDAO support :

Cdrecord(2) V2.01 or up - use cddvdrtools-17csd1 package including mkisofs on froloff web page.
cddvdrtools-19.. not supported.

Mkisofs(2) (ported by Nickk or froloff) : [mkisofs 2.01a32](http://mkisofs.201a32) or up (best: <http://froloff.homeip.net>)

Dvddao (1.3.4 or higher from Nickk - **2.0.4 or up recommended** for BD-R(E) support)
(<http://hobbes.nmsu.edu>)

Video ripping :

ffmpeg (0.49.pre or up ported tools)

dvdauthor (available on hobbes too)

(<http://www.smedley.info/os2ports/index.php?page=multimedia>)

Other :

REXXUTIL (standard OS/2 - eCS DLLs)

➤ I **strongly** recommend the use of **DANI's** drivers

➤ Danis506 tool package needed to enable all CDRWSEL functions

Trk2iso <http://hobbes.nmsu.edu> (for track to ISO option)

Cdrom.exe <http://hobbes.nmsu.edu> (used to enable cd-rom door close function)

Z.exe (Z!) <http://dink.org/z/download.htm> (for MP3 to CD option "output as *.wav")

Lame.exe <http://hobbes.nmsu.edu> (for MP3 to CD option in replacement of z.exe)

rxu.dll rxu1a.zip pakage <http://hobbes.nmsu.edu> . It replaces other possible kill process:

- Kill.exe <http://hobbes.nmsu.edu> or PKill.exe from TOP210.ZIP

sox.exe - Used to re-sample **MP3->WAV tracks to 44100hz** for compatible CD-Audio (or burn fail)

Pcam2.zip - Optional IBM tool used to capture screenshots (**SET PMCPATH=** into config.sys)

Gdiff - Option to update file with the contain of a diff file (eCS uses it for its ISO updates)

RAMFS drive Can be used for temporary file "**SET TMP=**" under config.sys

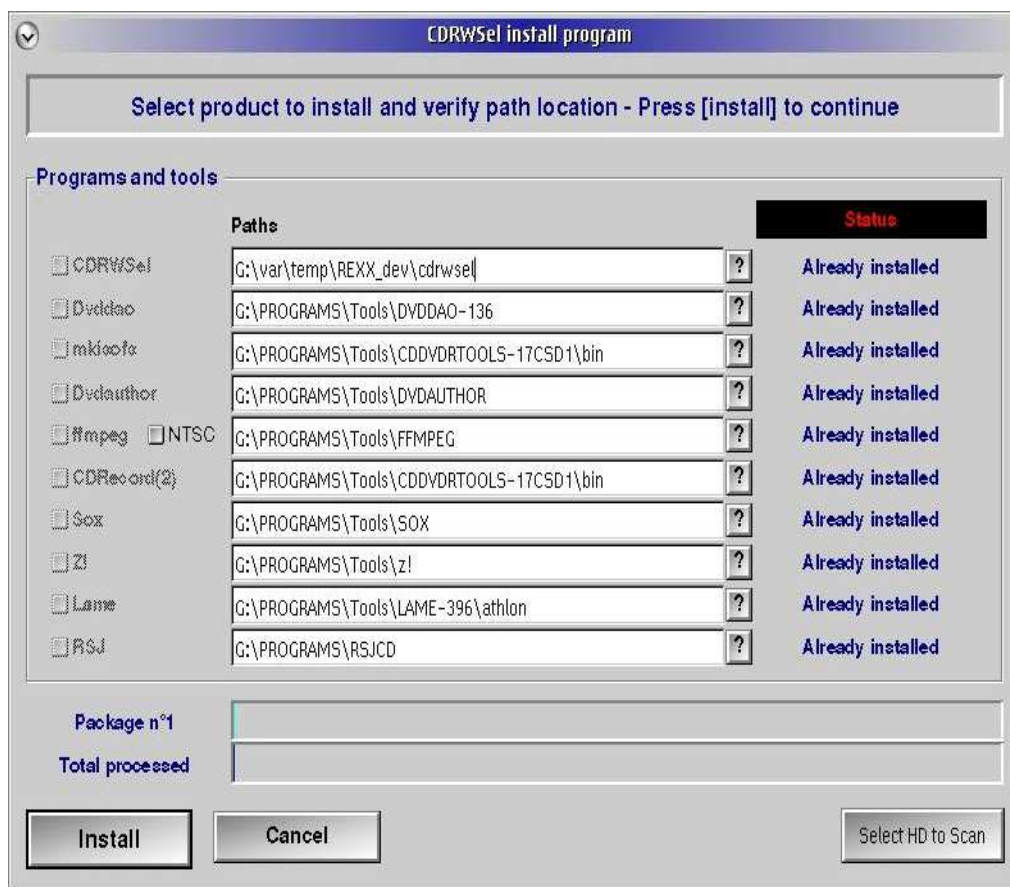
(If you would like use it, download it from hobbes "RAMFS110" or higher)

P2 / CDRWSEL installation

INSCDRW.exe will install CDRWSEL. If dvddao, cdrtools, rxu1a zip and other needed or optional package are under the same dir where inscdrw is. It will install these packages and put the RXU.DLL at the correct place (dll path). At end of installation, do needed extra actions according cdrtools and dvddao readme files and install processes (e.g. need of aspirout for nickk compilations)

During the installation an INI file for CDRWSEL is created with most parameters to make it run. At cdrwsel start, check burner list and do a refresh if needed. Verify each customization dialog and correct value if needed.

WELCOME TO GUI CDRWSEL



ffmpeg DVD format is PAL by default. Check NTSC checkbox if you want change it.

Click on Install without any selected package will create desktop icon and cdrwsel ini file if requested. As alternate install tool, you can use older inscdrw.cmd batch program.

To start CDRWSEL, click 2 times on its desktop icon.

(If it is a first install out of install tool, no INI file exist. Customization/Settings window will open. Check the suggested drive list and click OK. Cdrwsel is ready to work)

WELCOME TO GUI CDRWSEL

P3 / CDRWSEL Start parameters

```
CDRWSEL -i -s -u -vol -cdani
```

-i	- No more needed. Always uses INI file now
-s	- Actiate Speed selection (this parameter can be overwritten by INI file)
-q	- Use quiet mode (no beep)
-u	- Use only upper case characters into viewer (called through help)
-t	- Enable task list option.
-vol	- Display the volume label in a "popup" (if available). Dropping focus will close the "popup" window.
-cdani	- Use old "Refresh" process
-l	- (L) Enable debug mode (produces trace file under log path)
-NVC	- Option tu add if NORMAN Virus Control is installed and you enabled "Scan new or changed files" under On-access-scanner (NVC configuration) or CDRWSEL will not start (drrexx will open) like other rexx tools. This option adds a delay during INI file read.
-SDM	- Suppress CDWFSD reload message at CDRWSEL initialization with load RSJ daemon selected.
-FM	- Start filemanager only
-PP	- Bypass main menu and open DVDDAO private project first
-VBxx	- Enable verbose level for DVDDAO. xx can be from 2 to 10
-rsc	- Enable rescan option under dvddao project dialog
-config xxx.yyy	- Must be last parameter. Force dvddao to use external config file named xxxxx.yyy
-PB	- (working on - not usable)

Exemple:

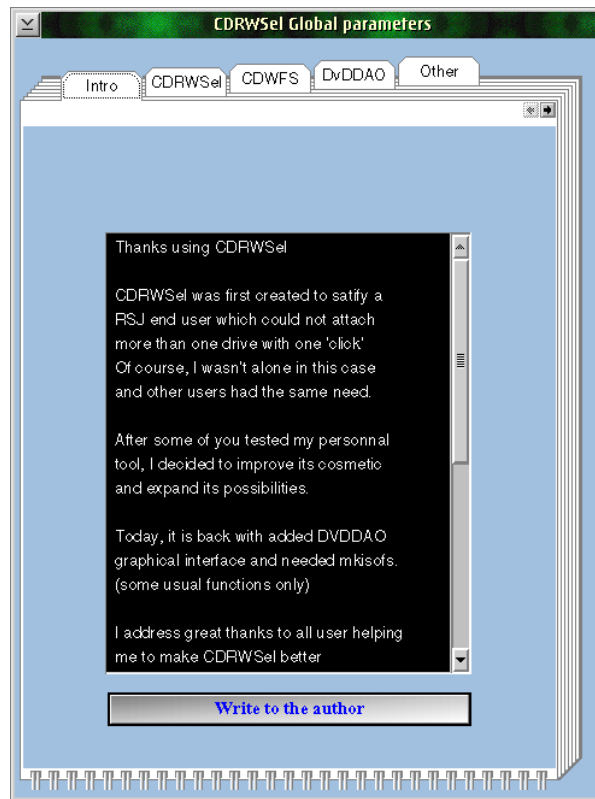
```
CDRWSEL -i -q -t -vol -sdm
! ! ! ! --> Suppress CDWFSD reload message if already up
! ! ! +-----> Show volume name of inserted CD if available
! ! +-----> Enable in "task list" option
! +-----> Use quiet mode
+-----> Use ini file
```

```
CDRWSEL /i /q /t (This syntax is correct too)
```

Note: When the program is first run and the cdrwsel.dat file doesn't exist, the New Drive List is run after answer to missing file message. Respond "save" to the first opened window before changing or updating drive list.

WELCOME TO GUI CDRWSEL

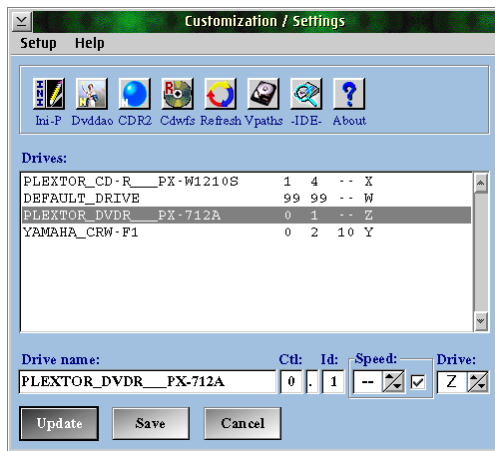
1 / CDRWSEL Welcome panel



Under the welcome panel, you can find why I wrote this GUI and a few great thanks to those helping me to improve CDRWSEL. The button [Write to the author] works with mozilla/Seamonkey mail. It opens a mail with required information and comment line for feedbacks and requirements. As long the version is in alpha or beta phase, bugs may exist and I'll work on it to find corrections as quick as possible.

WELCOME TO GUI CDRWSEL

2 / CDRWSEL customization/settings



* Rejected drive list useful to substitute generic names

- Drives** - All defined drives [LISTBOX]
- 1/ Click once to change DRIVE name (entry fields)
 - 2/ Click twice to delete unwanted DRIVE from list (will be kept for Vpath)
 - 3/ Manually enter a new drive into entry fields
- Drive name** - A generic name for the drive to use
- ctl*** - Adapter number (could be found under Hardware Manager)
- id*** - Drive position (IDE) or SCSI ID
- Speed** - Change current drive speed and new default for next use
- [x] click on check box to force use of speed parameter
- update (Ok)*** - Update and put last in list the selected line with new values
- Drive** - Assign a drive letter to a device (option enabled with "V1 Window" style)

- (*) Note: - You'll be prompted to save the new drive list at CDRWSEL close.
- Value of CTL + ID is checked to determine if the input is a new entry or should overwrite the selected drive.
 - Rejected drive list is available when a scare appears on the right bottom (RMB)



Open dialog folder to set general CDRWSEL start parameters and design (define INI file)



Open dialog folder to set DVDDAO parameters and link to mkisofs / ffmpeg / dvdauthor



Open Input field to specify CDRECORD2 path name



Open dialog folder to set general RSJ parameters (CD Writer Control)



Rescan system for available auto detect burner (auto-genetartation of id's xml mapping file)



Open Vpath dialog to add/remove source/destination drives/paths into main Menu 1



Display HW configuration using Daniela tool (Danis506 package)



Product version.Release.Modification level as well as author information

WELCOME TO GUI CDRWSEL

Setup

- Access to

- Define ini parameters : Open dialog folder to set general CDRWSEL start parameters and design (define INI file)
- Recorder : Open dialog folder to set general RSJ parameters (CDWFS - CD Writer Control). Check "Run RSJ Daemon" to have this option enable
- DvDDAO : Open dialog folder to set dvddao general DVDDAO parameters and link to mkisofs
- CDRecord : Open Input field to specify CDRECORD2 path name
- View (ini) : View contain of generated cdrwsel ini file
- Cdrum OP/CL : Allow use of open/close command (external program needed)
- Task list : add/remove cdrwsel from Task list (add parameter '-t' to enable function)
- Killer : select a thread killer tool available under CDRWSEL directory
- Run RSJ Daemon : Start RSJ daemon if it wasn't under config.sys
- Single burner : To use if only 1 burner exist and **attach didn't work**
- Drive list 1) Refresh : Delete and generate a new drive list (add drive name found)
2) Deep refresh* : Uses RSJ tool to check each physical adapter position
- Vpaths* : add/remove device/hd path into main windows (max=6)
- Tool bar : enable/disable tool bar visibility

Help

- Access to

- How to : Read file cdrwsel.doc
- ? : My tool version.release.modification

(*) Note : 'deep scan' = Auto detection of eligible CDRW/RSJ (unresolved names are replaced with generic names)

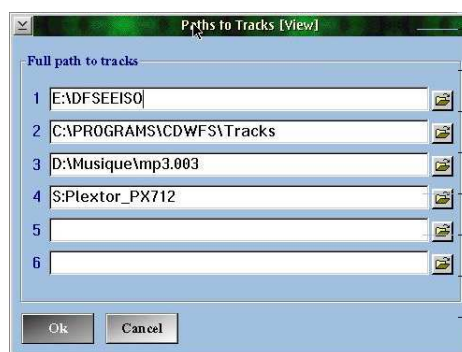
1/ CDRWxy (Drive is ready ctl=x, id=y)

2/ CDR?xy (Drive not ready flag received e.g. no CD in the burner)

3/ CDR*xy (Drive in use. Z: is already in use)

'Vpaths' see following description

Vpaths

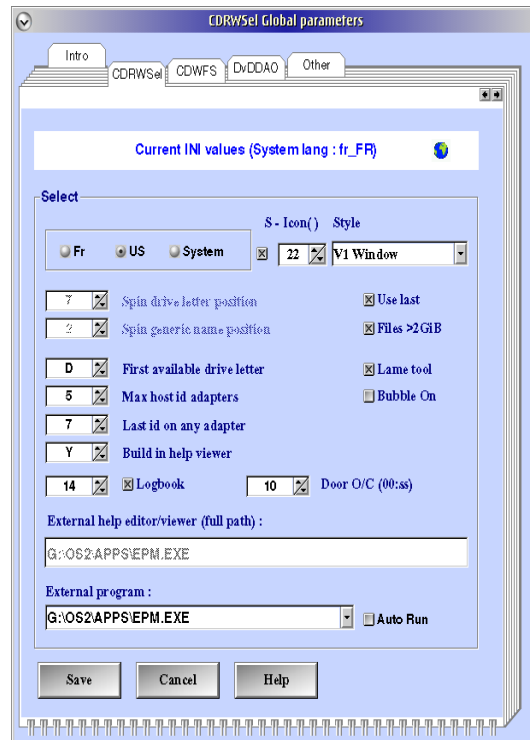


- To specify an audio CD in a CD-ROM, ignore the first "\" and the text following "drive_letter:" is used as comment and drive is supposed CD-ROM. e.g. (4) S:Plextor_PX712
- ? into input field opens a popup menu with the list of removed drives from "refresh list"
- Blanks in path name are not supported (program will change them into "_").
- If a path doesn't exist, it is created (multi level creation supported) han one level)
- **RECORDER** (reserved upcase value) in input field can be usefull to have [CDVIEW CDR:] for CD creation from iso files.

WELCOME TO GUI CDRWSEL

3 / CDRWSEL ini parameters

CDRWSEL ini parameters dialog (Select [Settings] + Ini-P [Icon] or [Setup] + [Define ini parameters])



Setting External program to **DVDDAO-MENU** enables dummy dvddao project to open when click on the main "Run" button

<u>Language</u>	: Select your language FR / US / SYSTEM (set_lang= from config.sys)
<u>Style</u>	: Select your app style window from the drop down list (see next chapter)
<u>Spin drive letter position</u>	: Select the default drive letter to use for cdattach (1 for Z, 2 for Y, 3 for X...)
<u>Spin generic name position*</u>	: Select the Drive name mostly used (= line number into the list)
<u>USE last *</u>	: Click on this option to use closing values instead of previous defined values
<u>First available drive letter</u>	: Define lowest drive letter available for Attach (from Z to the letter you assign)
<u>Max Host id adapters</u>	: Specify highest available ctlid (example for 0 and 1 follow) ➤ 0 - for the first IDE controller or 1 - for the second IDE controller ➤ Value may go above 3 if DANI's IDE to SCSI mapping is used
<u>Last id on any adapter</u>	: Specify highest IDE / SCSI id available for auto-detection (will save time at auto-detection time (1 is good for IDE))
<u>Build-in help viewer</u>	: Specify "Y" to use internal viewer, "N" for any user preference
<u>External help editor/viewer</u>	: only with previous option = "N" (specify full path to use e.g. c:\apps\epm.exe)
<u>External program</u>	: Drop the list down and click on -new- to add a new entry (to del, select an entry) ➤ Add full name to z.exe or lame.EXE here.
<u>Auto Run</u>	: Start the selected program at CDRWSEL startup
<u>S</u>	: Select 'S' to enable "V1 Window" smart icon button
<u>Icon()</u>	: Select drive device icon size under "V1 Window"
<u>Files >2GB</u>	: Enable support of single file size > 2GB (use of Jan Erick DLL)
<u>Lame tool</u>	: Use Lame to convert mp3 files to create CD-Audio (Lame must be installed)
<u>Bubble on</u>	: Enable Bubble help on dialogs
<u>logbook</u>	: Open logbook under or above main "V1 Window"
<u>Door O/C (00:ss)</u>	: Adjust drive door open time after "open door" was requested under dialog

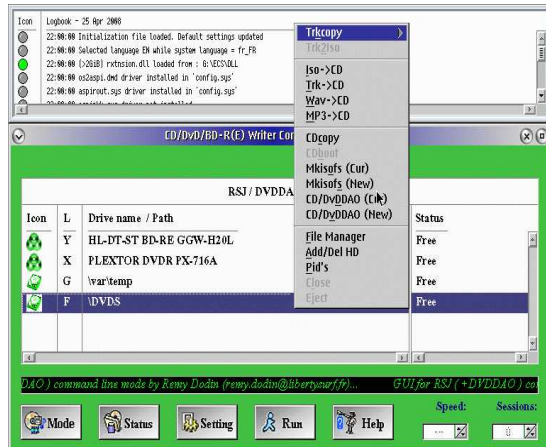
(*) Note : Click on save to update or save CDRWSEL ini file.

WELCOME TO GUI CDRWSEL

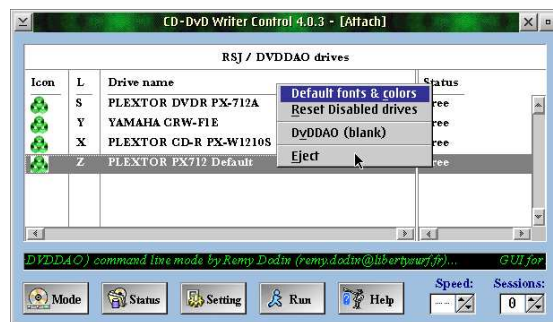
4 / CDRWSEL Main Appl Window

Appl Window *style* is selected through "*define ini parameters*" window

4.1 V1 Window / RSJ + DVDDAO (DVDDAO is available under VIEW mode + RMB)



Main RSJ (**view mode**) or/and DVDDAO
With above logbook * dialog (auto position)



Main RSJ (**attach mode**)

- List-Title : Title specifying current supported programs and drives [CONTAINER]
Function are enabled according which program is installed. With mode button
enabled : [Attach] Enter or click twice on a drive [Free -> Attach], [Attach to
finalize/free]
- [View] Enter or click twice and open [CD_view], [restore CD_view]
With mode button disabled (dvddao only). Enter or click twice [Open DVDDAO]
- Icons Color:
- | | | |
|---------------------|----------------------------|----------------------------|
| Green =Free | Yellow =Running | Red =Attached |
| Black =Error | Orange =Free CD-ROM | Blue =CDView/DvDDAO |
- mode * : Change from "Attach" to "View" or reverse [PUSHBUTTON]
* Enter on an entry start attach or view (dvddao if no RSJ)
- Sessions : Select the number of existing sessions to skip (<16) [SPINBUTTON]
- Settings : Access to defined drive list dialog [PUSHBUTTON]
- Status : Gives the result of chkdisk /v of [?:\]
(available space on cd - number of sessions...)
- Run : Run personal program [PUSHBUTTON]
- Help : Direct Help access [PUSHBUTTON]
- RMB : Popup options (will change when on path, CDROM or attached CDRW)
See following description

(*) Note : - Button disabled if RSJ not installed

- To open the 'logbook' dialog, active the function under cdrwsel init parameters. Dialog position may change according space left on the bottom of the main dialog (above or under)

WELCOME TO GUI CDRWSEL

- RMB Popup options (on a selected device)

trkcopy	: Trackcopy function (data, audio, video)
Expert	: Allow multiple possibilities allowed under RSJ
Data	: Work with Datas only
Audio(DAO)	: Work with audio files only wav
Video	: Work with video files (video block size used)
trk2iso	: Converts each *.trk file into *.iso file
Iso->CD	: Create a CD from an iso image file
Trk->CD	: Create a CD from a track image file
Wav->CD	: Create an audio-CD from wave file
MP3->CD	: Create an audio-CD from MP3 files
Cdcopy	: Use RSJ Cdcopy functions
Cdboot	: Calls cdboot (PM) for the drives "Attached state"
Mkisofs	: (Cur or New) Open DVDDAO with Mkisofs options enabled only
DvDDAO *	: (Cur) Open DVDDAO using current selection as input
	: (New) Open DVDDAO with an new blank work project
File Manager *	: Open integrated small filemanager (available on paths only)
Add/Del HD *	: Open 'Vpath' to add HD path into container list
Pid's *	: View and manage background cdrwsel started processes or System PID's (kill)
Close	: Close drive door (if cdrom.exe is installed)
Eject *	: CD-ROM/DVD-ROM or free CD-RW/DVD-RW drives

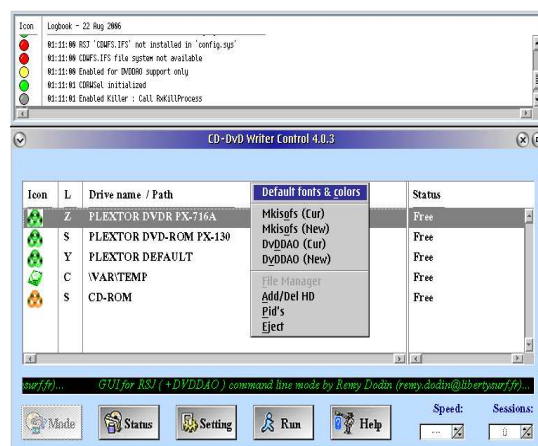
- Other Popup menu

Default fonts & colors	: Reset general fonts and colors to original values
Reset Disabled drives	: Reset disabled drives done under specific process (use when needed)
Eject	: CD-ROM/DVD-ROM or free CD-RW/DVD-RW drives

- Save the 'log book' contain (see CDRWsel INI parameters about how to activate 'log book' window)

Save log	: Save the current logbook into a file under temp directory
----------	---

4.2 V1 Window / DvDDAO only (see previous description)



- (*) Note : - Options supported when only DvDDAO is enabled
 - This "window" supports Color and Font drag and drop (a few limitations only)

WELCOME TO GUI CDRWSEL

4.3 Window (no more updated)



CD:	: this field is empty at first run time	[SPINBUTTON]
Drive:	: Drive letter to be used with the attached CDRW	[SPINBUTTON]
Sessions:	: Select the number of existing sessions to skip	[SPINBUTTON]
Attach	: Perform cdattach using previous parameters	[PUSHBUTTON]
View	: Start CDView using CDR/W parameters	[PUSHBUTTON]
Finalize	: Direct access to finalize options	[PUSHBUTTON]
Status	: Information on CD	[PUSHBUTTON]
Settings	: Access to define drive list dialog	[PUSHBUTTON]
Run	: Run personnal program	[PUSHBUTTON]
Help	: Direct help access	[PUSHBUTTON]
RMB	: on background dialog available (see J Window description)	

4.4 J Window (no more updated)



CD:	: this field is empty at first run time	[SPINBUTTON]
Drive:	: Drive letter to be used with the attached CDRW	[SPINBUTTON]
Sessions:	: Select the number of existing sessions to skip	[SPINBUTTON]
Attach	: Perform cdattach using previous parameters	[PUSHBUTTON]
View	: Start CDView using CDR/W parameters	[PUSHBUTTON]
Finalize	: Direct access to finalize options	[PUSHBUTTON]
Status	: Information on CD	[PUSHBUTTON]
Settings	: Define drive list dialog	[PUSHBUTTON]
Run	: Run personnal program	[PUSHBUTTON]
Help	: Direct help access	[PUSHBUTTON]
Speed	: Change current speed stting only	[PUSHBUTTON]

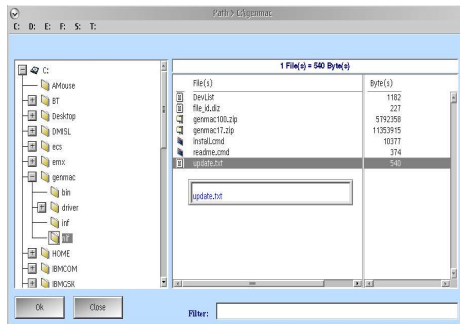
Note : - (RMB) on any background window style opens a popup menu. You can reset fonts and colors, reset the in-use drive list if "attach" remains disabled for a drive letter. Use new DVDDAO GUI
 - Enter (2 click) on a drive will open "V1 Window" limited sub-functions popup menu

WELCOME TO GUI CDRWSEL

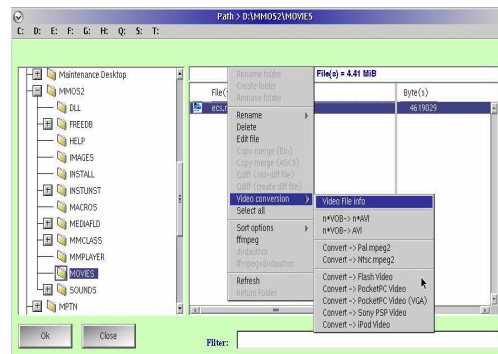
5/ Main window options

5.1 CDRWSEL Integrated filemanager

The new filemanager is fast and has a few nice options usefull for CDRWSEL (opened through Main dialog popup windows or through filemanager icon button). Left side is a tree view. Enter on a folder display corresponding files and sizes under right view. Total size of selected files is given a the top of the container. Bottom field allow you to specify filters.

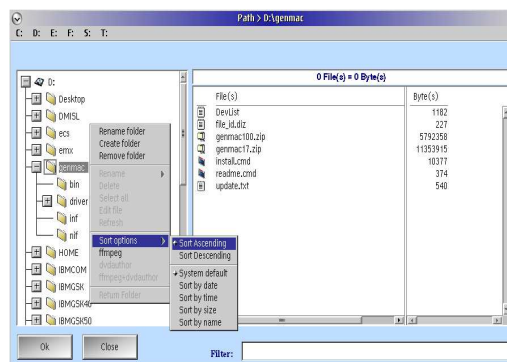


Rename sample (popup is closed losing focus)



File options

- Enter on a file allow you to rename it
- Merge : copy append files (bin or acsii) into ~FLMERGE.xxx (e.g. merge *.ts from some video recorder)
- Gdif can be called to update existing ISO file with a Diff file (e.g. eCS V2 B3 update to V2 B3a)
- Video conversion: quick video ripping with ffmpeg to MPG, AVI or FLV (flash).
- RMB on file container allow several options like global extension rename, delete selected files.
- Sort options are available (be carefull, sort option may be long if a very big number of file exist into the current directory). e.g. use time sort option for video *.ts files before use of merge option.
- ffmpeg, dvdauthor and ffmpeg/dvdauthor are selectable option to convert video files into a different video format (e.g. video dvd) during drag and drop process. dvdauthor is used for video dvd format. You can choice between dvdauthor only (input file is mpeg DVD compatible or use ffmpeg+dvdauthor for any other video file type including mpeg if not DVD compatible



- Drag/drop files into project is supported or you can use ok button. When a folder is expected to be returned into the calling dialog, click on ok to give back the folder value. e.g. filemanager called from Vpaths .
 - RMB under tree view, allow folder rename, create folder and return folder into dvddao project
 - Filter: you can filter displayed files using one or more filters separated by a ";". e.g. *.mp3;*.wav
- Note : Popup is closed losing focus.

WELCOME TO GUI CDRWSEL

5.2 PID's



- My current PID's
Show PID's started by CDRWSEL. Click 2 times on a PID to access kill feature (prefer **rxu.dll**)
- All system PID's
Show all running PID's under the system. Click 2 times on a PID to access kill feature (prefer **rxu.dll**)
- RMB into the list allow you to change the view from detail to bitmap .

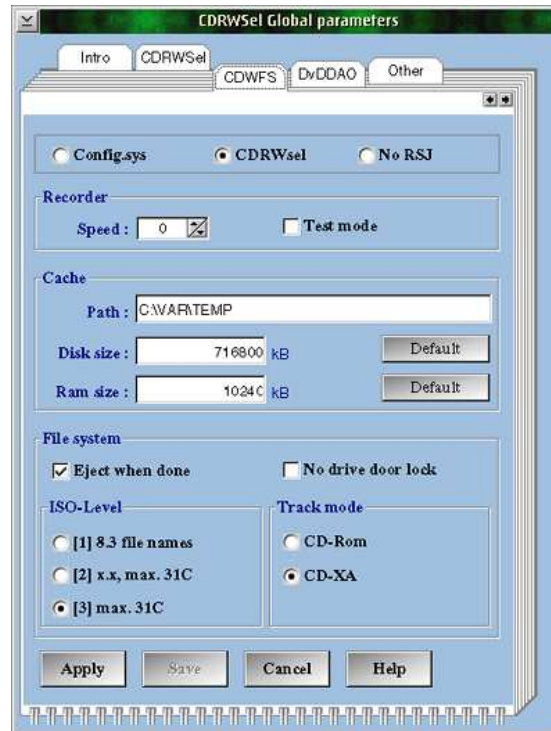
5.3 Add/Del HD

See under **2 / CDRWSEL customization/settings** section: **Vpaths**

WELCOME TO GUI CDRWSEL

6 / RSJ (CDWFS)

6.1 RSJ ini parameters (Select [Settings] + Cdwfs [Icon] or [Setup] + [recorder])

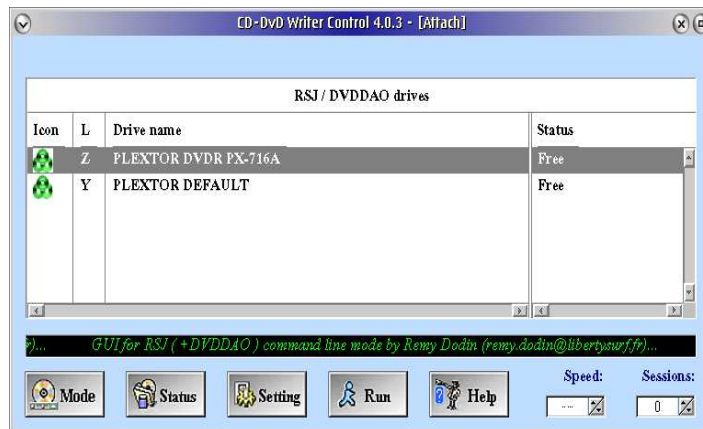


- | | |
|-------------|--|
| RSJ version | : Version is displayed in the dialog title bar |
| config.sys | : Select this option if you want to change CDWFSD defaults in config.sys. Changes take effect at next reboot |
| CDRWsel | : Select this option to load/change CDWFSD parameters for all new attach processes - Drives must be detached before using dynamic CDWFSD replacement |

Note : For more description or options details, refer to RSJ CD Writer control (RSJ doc)

WELCOME TO GUI CDRWSEL

6.2 RSJ ATTACH (burner folder into drive folder)



[Attach] is into Main window title. If not, click on Mode button

To attach a burner to be able to use it as a HD (except media restrictions), select the desired burner and press enter key or click 2 times on a burner from the burner list. Repeat the opération for a second burner. Each attached burner has its icon in red.

To finalize a current attached, click 2 times on the attached burner (red-icon) or select the attached burner and press enter key. See next chapter 5.2 RSJ Finalyze

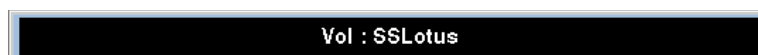
6.3 RSJ Special attach message

Attaching a non-blank CD results in displaying the number of sessions, whether CD is data or audio and total used on CD.



Choose one of the options. select "continue" to work with this attached CD.

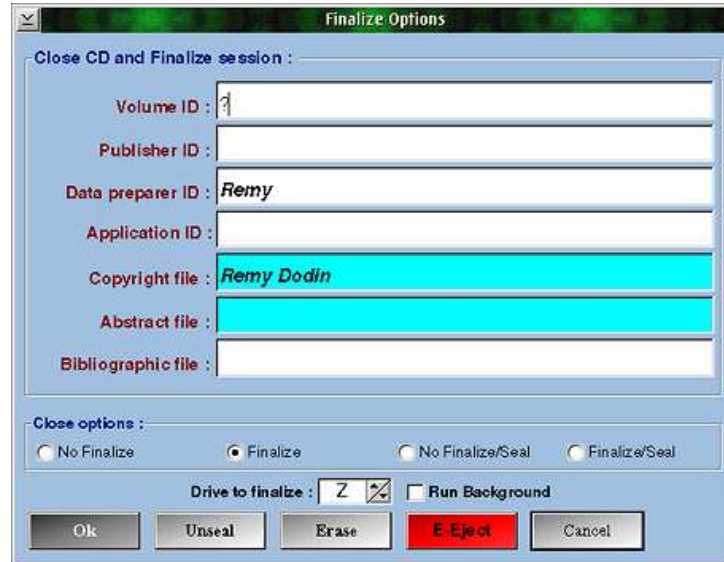
If parameter "-vol" was specified starting CDRWsel and a volume name exist, following popup message is displayed :



WELCOME TO GUI CDRWSEL

6.4 RSJ Finalyze

Select [Finalize] or [F]. Under V1 window, click 2 times or [enter] key on selected [attached] drive



- a. No finalize = Close CD only
- b. Finalize = Close CD and finalize
- c. No Finalize/Seal = Close & Seal CD
- d. Finalize/Seal = Close and finalize & seal CD
- e. Emergency eject = Flush buffers and eject the CD
- f. Add complementary comments (only validated with b/ and c/). e.g. Copyright, Author ...
- g. Unseal (remove seal protection if CD was written by RSJ)
- h. Erase RW media only
- i. Verify "Drive to finalize"
- j. Check "Run Background" to allow finalize as detach process (usefull if more than one finalize has to be done)

Note : RMB click on background of "Close CD and finalize sessions :" part opens a popup window. You can save or restore general updates from entry fields (see the cursor position on the picture). A "?" in the "Volume :" entry field does the same.

* After selecting save, give a title to your new profile (uses to update the popup window list)

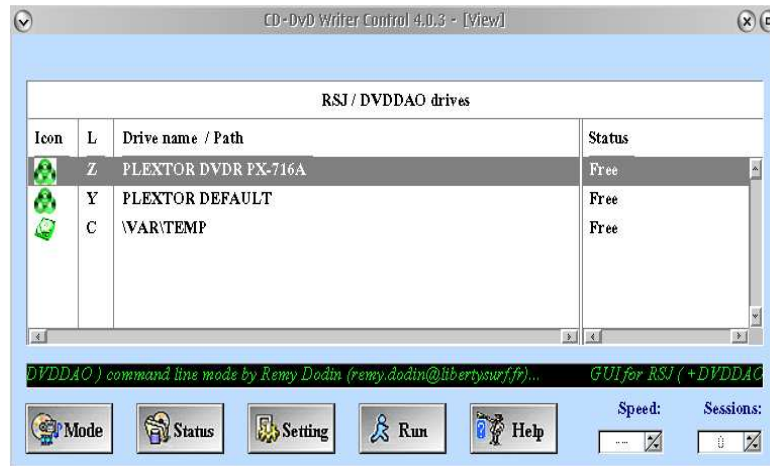
- e.g. - DEFAULT (for general comments)
- CDRWSel (for my backup of CDRWSel)

* The list allows 10 entries.

WELCOME TO GUI CDRWSEL

6.5 RSJ CD-View

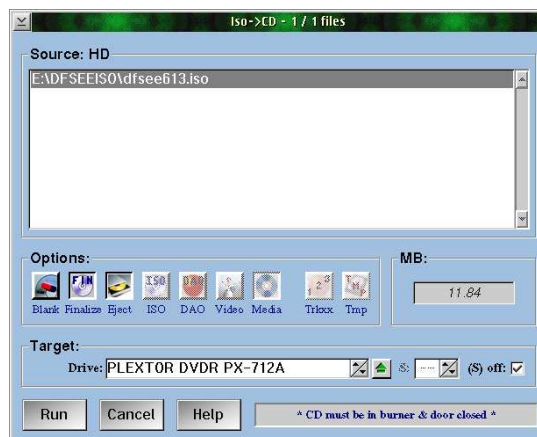
- Open RSJ CD_view window



[View] is into Main window title. If not, click on Mode button

Click 2 times or select drive on press [enter] key to open RSJ CD-View window
At RSJ CD-view close time, Click 2 times again to restore free icon status

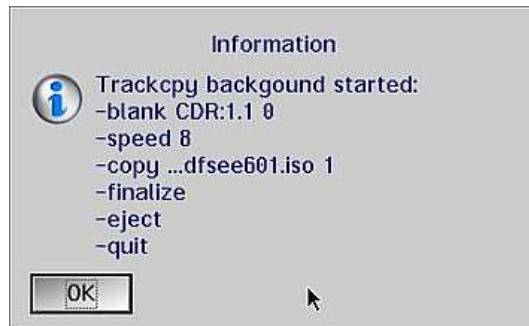
- Create CD from ISO or TRK file
 - Use "V1 Window" style
 - Add full path name where all *.iso (trk) files are under Vpaths (do it one time only)
 - Under "V1 window", change mode to CD_view
 - RMB on the HD path name where *.iso (trk) files are
 - Select Iso->CD (Trk->CD) from the popup window



- Select the source *.iso (trk) file (Source: HD - One selectable file only)
- Select the destination drive (Target:)
- Select "Blank" for CD-RW if needed
- Select "Eject" at end of process

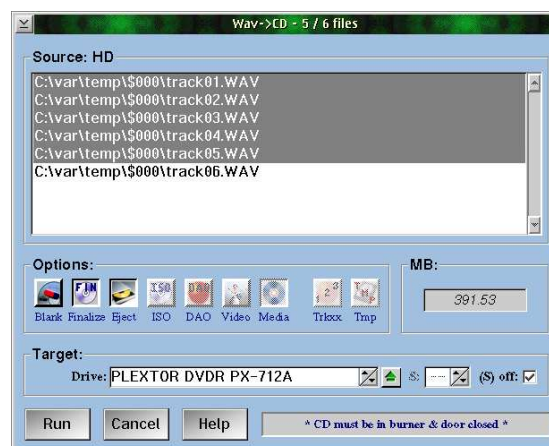
WELCOME TO GUI CDRWSEL

- Select correct speed if needed
- Select the correct speed to use (**size auto updated according selection**)
- Be sure to have a CD in the burner and drive door is closed



Type of message issued after you press the "Run" button. You'll find all step which are going to be processed according your request. As you can see, the process runs in background as "detach" mode (RSJ progress bar isn't available yet. Door opens at end of process with "Eject" option). The total process time to finish is file size and speed dependant. The corresponding Pid can be found / killed under CDRWSEL " Pid's " window

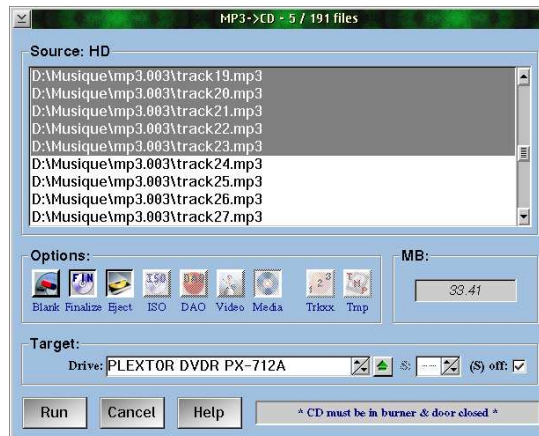
- Create CD audio from WAV files
 - a. Use "V1 Window" style
 - b. Add full path name where all *.wav files are under Vpaths (do it one time only)
 - c. Under "V1 window", change mode to CD_view
 - d. RMB on the HD path name where *.wav files are
 - e. Select Wav->CD from the popup window



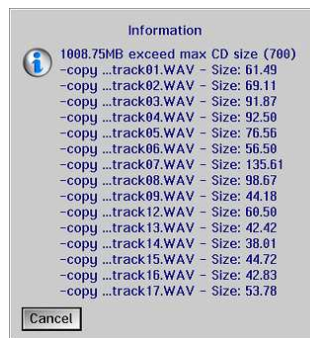
- Options and target selection is similar to *.iso process except "multi-selection"

WELCOME TO GUI CDRWSEL

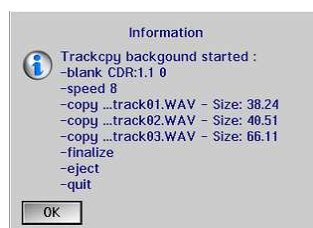
- Create CD audio from MP3 files
 - a. Use "V1 Window" style
 - b. Add full path name where all *.mp3 files are under Vpaths (do it one time only)
 - c. Under "V1 window", change mode to CD_view
 - d. RMB on the HD path name where *.mp3 files are
 - e. Select MP3->CD from the popup window (z.exe or lame.exe needed)



- Options and target selection is similar to *.iso process except "multi-selection"
- Process uses two stages
 1. MP3 to wave (message field is updated during MP3 to wave process)
 2. wav to audio CD (message appears if maximum CD size is exceeded)
 - a. If size exceed 650MB, you can continue if media allows 700MB
 - b. If size exceed 700MB, process will be aborted .

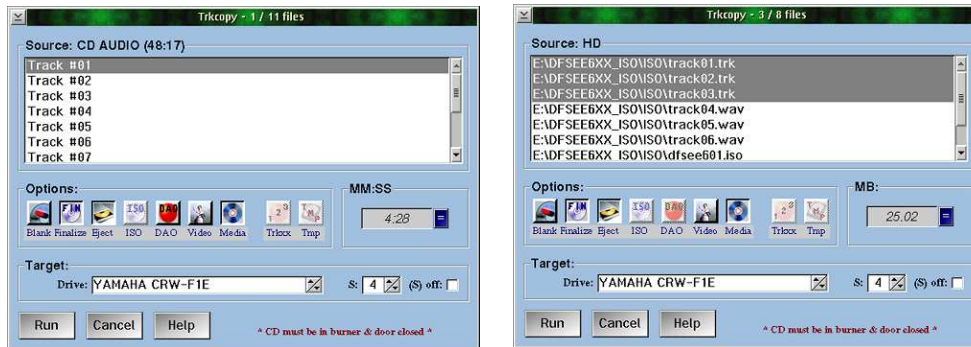


Normal process gives you an information message only and audio CD creation start.



WELCOME TO GUI CDRWSEL

- Extended track copy functions (trkcopy)
 - a. Use "V1 Window" style in CD_view mode
 - b. Select the drive / path to work with (from CD and from HD screenshots follow)
 - c. RMB on the delected input
 - d. Select Trkcopy + (expert or datas or audio or DAO or video)



- Options and target selection are similar other process with "multi-selection"
 - DAO will select all files and is available for audio CD source only
 - Media wil allow you to change destination from HD to CD or reverse.
- ☒ Expert - Most options are validated and wrong selection can give bad result *Warning*
 - ☒ Datas - Only options for data tracks processing is enabled
 - ☒ Audio - Only options for audio tracks processing is enabled
 - ☒ DAO - Only audio CD to audio CD is enabled (full copy with disc at once)
 - ☒ Video - Set on/off sector size of 2336 bytes (instead of 2048 bytes)

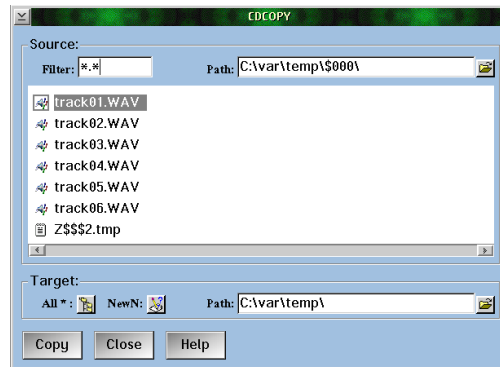
- Convert Trk to Iso

This option allow you to copy tracks to a HD path destination and process them to get ISO image files (trk2iso is needed).

- Create CD/DvD using Cdcopy

- a. Use "V1 Window" style in CD_view mode
- b. Select the path to work with.
- c. RMB on the selected input
- d. Select CDcopy

WELCOME TO GUI CDRWSEL

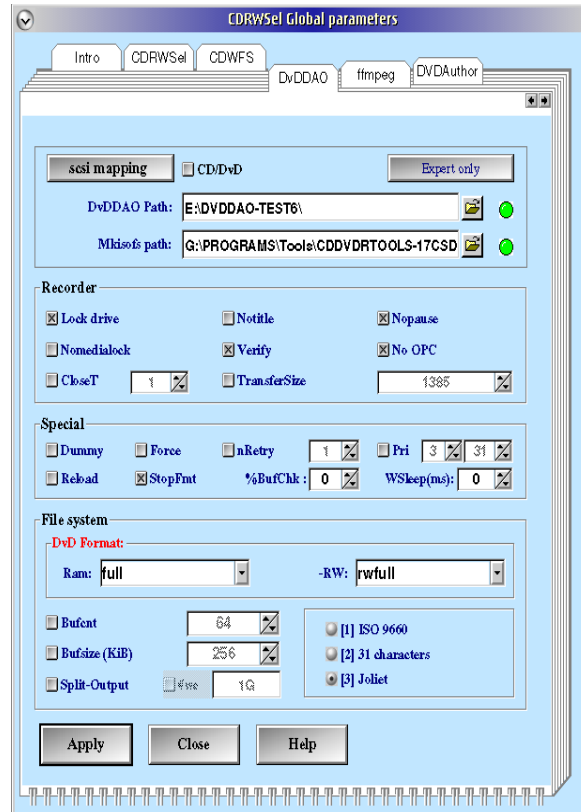


- You can change the initial source path
- You can add a filter to have specific files only (wildcard * can be used)
- 'blank' character isn't supported in path or file name
- Specify target path (an attached CD seen as HD can be used)
- Select 'All *' to Cdcopy all files from current and sub directories
- Select 'NewN' to Cdcopy a file under a different name
- For more information, review Cdcopy under RSJ documentation

WELCOME TO GUI CDRWSEL

7 / DVDDAO

7.1 DVDDAO ini parameters (Select [Settings] + Dvddao [Icon] or [Setup] + [dvddao])



- scsi mapping : Display result of cdrecord2 "scanbus"
- CD/DVD : Display only CD/DVD drives from scanbus
- DvDDAO Path : Path name to dvddao program (green LED = ok)
- Mkisofs path : Path name to mkisofs2 (green LED = ok)
- Expert only : Mkisofs2 parameters (enabled if corresponding LED = green)
- StopFmt : Stop background format is required for some burner like **Plextor** etc...
- Reload : Reload DVD before verify opération (needed for some burner !)
- %BufChk : Usefull if burner is on same PATA IDE controler as the source drive
specify % of burner buffer
- WSleep(ms) : Usefull if burner is on same PATA IDE controler as the source drive
specify sleep time in ms (see dvddao 1.37 or up help)

Suggest to set [Verify] on to use MD5 verification process .

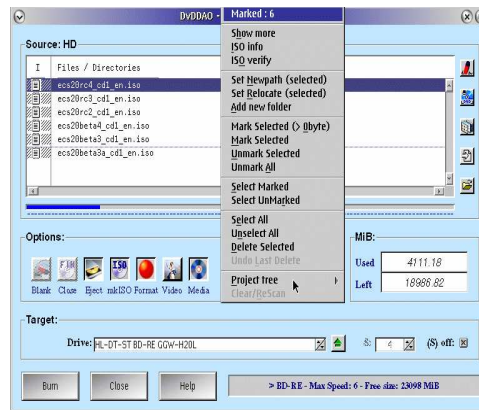
Groupbox Recoder, Special, File system and last options are explained under DVDDAO help*.
Or click on Help button to get help output from DVDDAO.exe

(*) Note : Use dialog help button to get dvddao online help information.

WELCOME TO GUI CDRWSEL

7.2 DVDDAO main dialog options

At second window open after selecting option from main CDRWSEL window popup menu, a message is issued about if media is missing into burner. Main CDRWSEL window show source or target drives
Target is always confirmed under second window.



Erase selected files from the current project (also available under RMB)



Switch between data or video DVD (**VIDEO_TS + AUDIO_TS**) don't mark these folders



Access to some logs and user options (1*)



Import / Export created project (import append allowed) (2*)



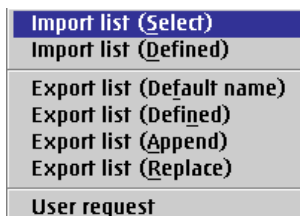
Open internal filemanager to add files or folders into the project container (drag/drop)

1*



Set a volume ID to the DVD
Blank volume ID set previously
View some tempory files (e.g. mkisofs & dvddao logs)
View last run generated parms
Full disable of DVDDAO and mkisofs enabled
... next options under investigation ...

2*



Import a list using filemanager
Import a list "full name is known"
Export a list using CDRWSEL default naming convention
Export a list with a given full name
Export and append the list to an existing one
Export a list, erase older same name
User specific (comming ...)

WELCOME TO GUI CDRWSEL



Only RW media may accept this option (enabled when usable, default is ok) *



Close/Finalize media (use it as is. DVDDAO will finalize media after write) *



Eject the media after write opération *




Use mkisofs to generate image file used by DVDDAO (RMB Option field for default)



Format the media (for DvD RW/RAM or BD-RE with some restriction) or Cdrecord DAO *



Enable mkisofs video block size option for video DVD or  Cdrecord audio mode.



Select output target. It may be a DVD/BD-R(E) or a HD path



Create incremental files



Use HD (Hard Disk) support for output/input mkisof/dvddao instead of pipe function

RMB on [Options:] groupbox background, opens popup to select cdrecord or change mkiso default.

- KiB group box descriptions

Used : Full size of current media (DVD) + marked items (auto updated)

Left : Size left on the media after adding marked items from the current project

- Right bottom field

This is a message area. Some nice information are displayed in it like loaded DVD media type, DVD size and max supported speed and more. RMB in this field show you DVDDAO version and DVD media manufacturer id.


- Options group box

RMB click on the background allow you to change default mkiso on/off and

- Size bar

Under item container (project), there is a size bar which color changes according available space on the inserted media. Incorrect calculation gives a red line (e.g. 0 byte free on DVD)

- Open/Close burner door

To open the burner door, use this icon button:  door open and a timer start. At end of timer, door close and inserted media is checked.

(*) Note: This option can be standalone used in data mode, without item and with mkisofs OFF

WELCOME TO GUI CDRWSEL

7.3 DVD/BD-R(E) to DVD/BD-R(E) or CD/DVD/BD-R(E) to ISO/IMG file

After manual add of DVD-ROM like a burner (settings + add into burner list (use input field)). To get the ctrl + id of the DVD-ROM, open DVDDAO init parameter window and Push [scsi mapping] button. An other burner can be used as DVD input too. Buner can not be input and output at the same time.



Select destination burner and click [Run].

RMB on the message field as indicated by the mouse pointer display DVDDAO version and additional messages.


To create an ISO or IMG file of the DVD, click on [Media] button to select HD destination and specify a full target file (e.g. E:\ISO_PATH\MY_DVD1.ISO). If ISO or IMG is missed, ISO is added to the given name.

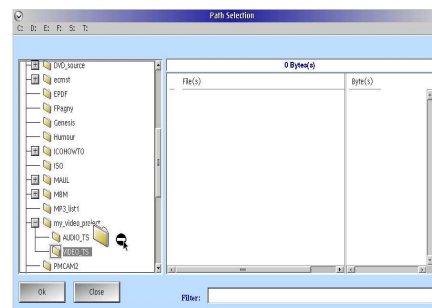
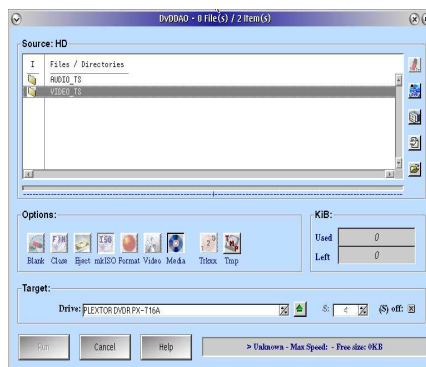
WELCOME TO GUI CDRWSEL


7.4 Create a VIDEO DVD

- Optionnal settings not all used for video dvd/bd
 1. mkisofs, used to create the video ISO image file before burn with dvddao
 2. ffmpeg, used to convert different video file format (see ffmpeg chapter)
 3. dvdauthor, used to convert mpg dvd video compatible format to VOB files (see dvdauthor chapter)
 4. pmcam2 (pmcamera), used to make screenshots of "tree view" (see pmcam2 chapter)
- Prepare the new video DVD (project) from existing VIDEO_TS on your HD

From main window, select: DvDDAO (new)

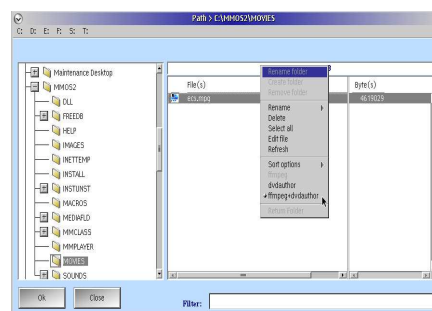
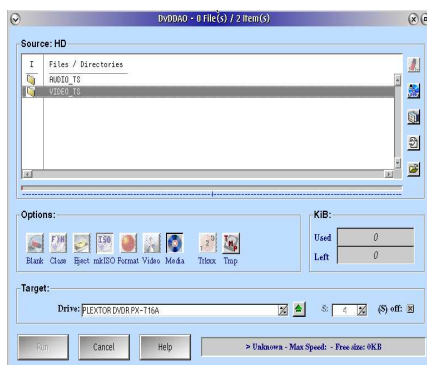
Click on the right icon :  . Project is now turned from data mode to video mode



Click on the right icon :  (filemanager) and select from your HD the VIDEO_TS under which you put all needed files (*.VOB etc...) to create a DVD. Use **drag/drog** of the video folder into the project. Current VIDEO_TS path will be replaced by the dropped VIDEO-TS path (only folders having same name as the current selected folder can be drag/drop (or use return folder). To verify the current folder path from your project, use RMB and click on "show more".

- Prepare the new video folder (project) from video files (e.g. avi or mpg)

Proceed as above except that you select an AVI, MPG or TS file, RMB and select **ffmpeg+dvdauthor** following by a **drag/drop (ONLY)** into VIDEO_TS folder. This process may take long time (nearly the video time). At end of process, all needed files (*.VOB etc) are under VIDEO_TS created under existing folder under your temp\filename directory (must be enough size to hold a full DVD size)





WELCOME TO GUI CDRWSEL

- Verify and Burn Video project

As soon default VIDEO_TS or AUDIO_TS is replaced by an existing path, a "\" is appended at the end of the corresponding displayed folder. e.g. VIDEO_TS is replaced by VIDEO_TS\ .

Any folder ending with "\" can be opened (enter key or click 2 times) and the files are listed under internal filemanager. At this time, you can make any changes you want (not recommended for video files).

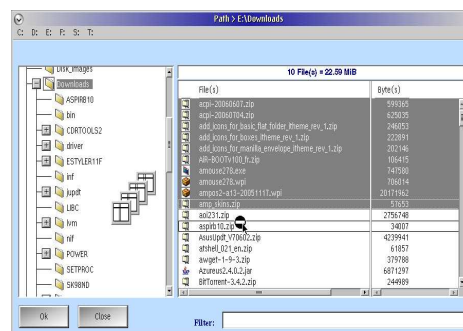
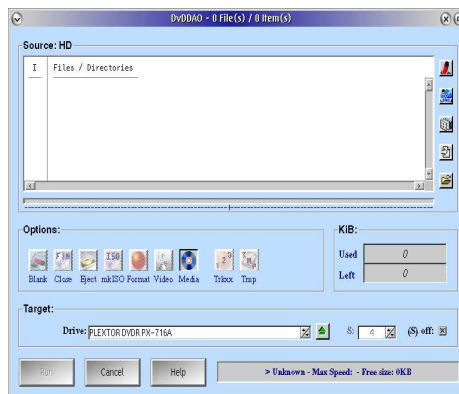
If no media is inserted into the burner, push the right icon  to auto open/close and check media. Once media is loaded and is empty or formatted (RW), you can proceed to the burn operation. Push the [Run] button.



At end of burn process, you can review mkisofs logs and dvddao logs using the right icon :  Select tempory files.

7.5 Create a DATA DVD/BD

- Optionnal settings not all used for data dvd/bd
 1. mkisofs, used to create the video ISO image file before burn with dvddao
 2. ffmpeg, used to convert different video file format (see ffmpeg chapter)
 3. dvdauthor, used to convert mpg dvd video compatible format to VOB files (see dvdauthor chapter)
 4. pmcam2 (pmcamera), used to make screenshots of "tree view" (see pmcam2 chapter)
- Prepare the new data DVD/BD (project)

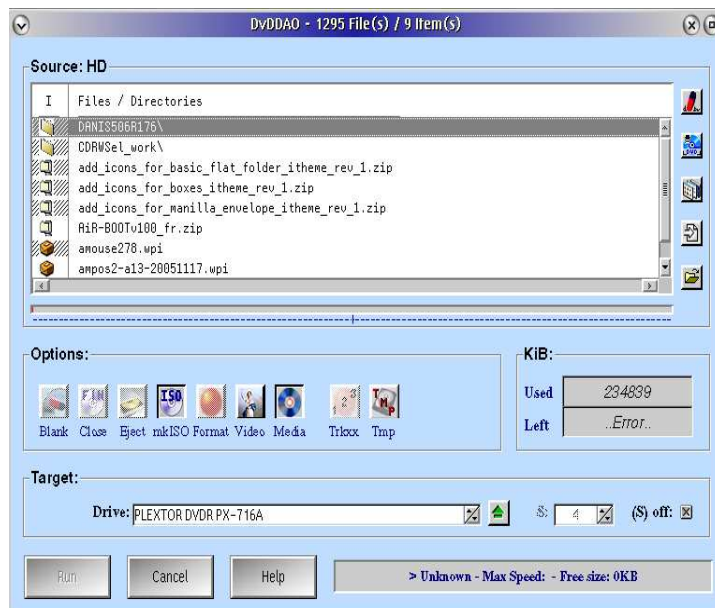
From main window, select: DvDDAO (new) to start with an empty project or DvDDAO (cur) to fill the new project with files and folders existing under selected path.



Click on the right icon :  (filemanager) and select files or folders from your HD and **drag/drop** then into the new project. Be carefull, if you drop files into a folder existing in the project, files will be relocated into this folder name under the DVD/BD. After having added files and folder, you can arrange final location under the DVD. To do that, select files or folders and RMB and select Set newpath from the popup menu. To use root, enter "\" for Set newpath . To temporary remove a file or folder from the project, unmark it (only marked items taken). To delete an item, use RMB and delete selected or you can use icon : 

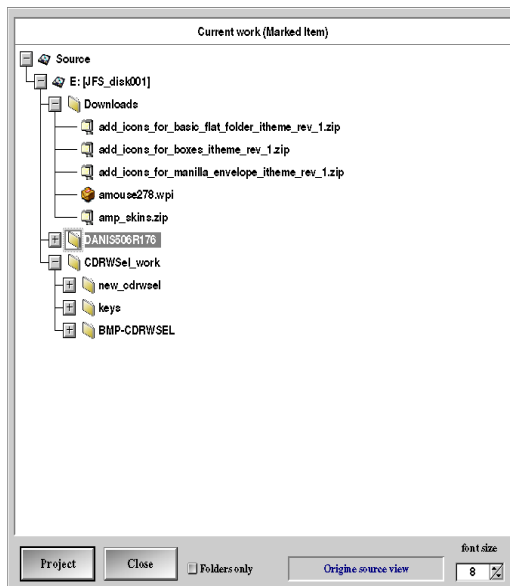
WELCOME TO GUI CDRWSEL

Here is a sample with folders, files and some unmarked files which are not going to be added into the final project.

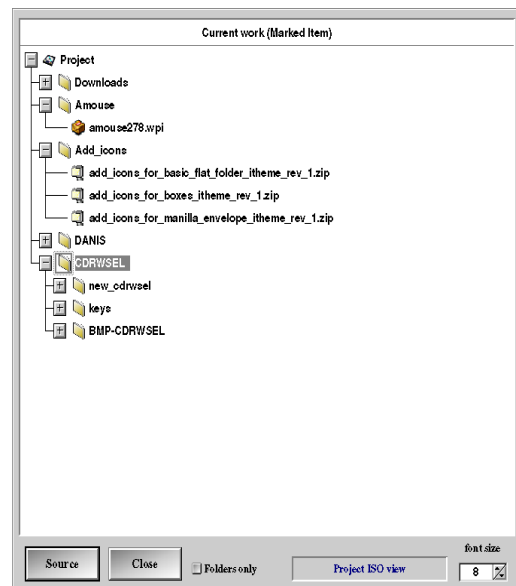


Before burning the project, you can display the source tree or the tree as it should be on the DVD. Under this "tree view", you can choose to show paths and files or peths only. There is an option to use start PMCAM2 with needed parameter and taken a screenshot of the tree which could be uses as DVD cover :)

Screenshots of "tree view" (source and DVD project)



Source view.



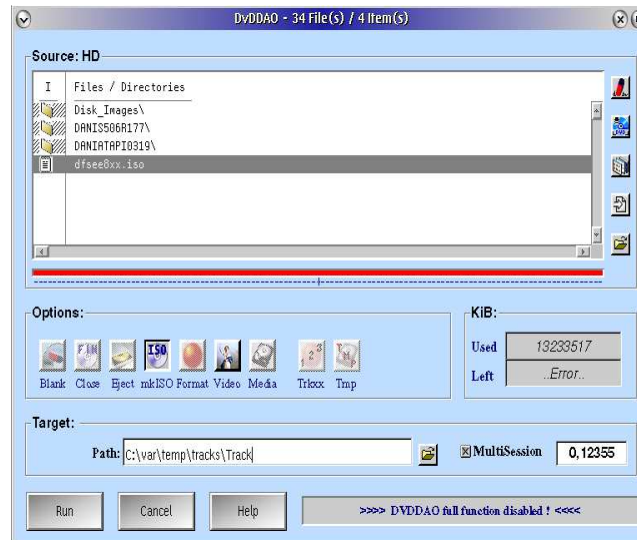
Project view.

RMB (right mouse button) to select PMCAM if installed as expected (see PMCAM2 chapter)
To use PMCAM, you must add `SET PMCPATH=pmcam_full_path` into config.sys

WELCOME TO GUI CDRWSEL

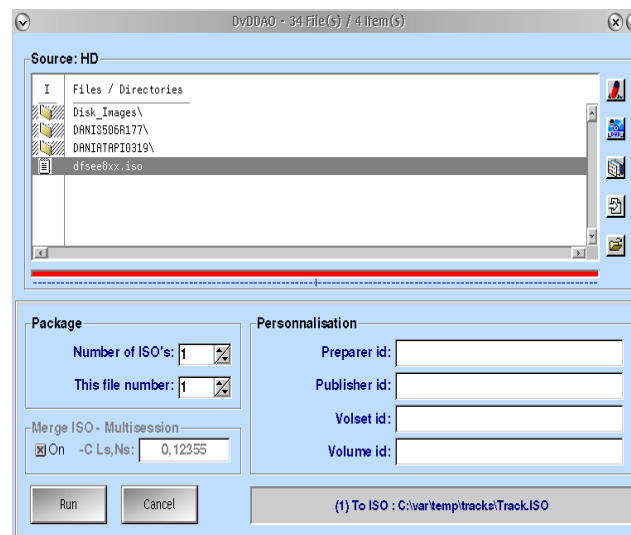
7.6 Create an ISO file using Mkisofs

- Main mkisofs (only) dialog - Step 1



Select multisession if this image is to be append on an existing CD. Enter value return from cdrecord -msinfo into the entry field (next start session block). Enter files or folders into the project. You can add an older ISO file to merge with (must be Selected and Unmarked) or it will be added into new ISO file like any other files. Run to process next step.

- Step 2




Update needed field. Output file name is given in the message fiels. If an ISO file was selected to be merged, some fields are auto updated. Without ISO file in the list to merge with and Merge is set under this window, the current image is merged into the same ISO file if exist. Ls,Ns are values returned from a previous Cdburn or is taken from a burned CD with cdrecord -msinfo option.

WELCOME TO GUI CDRWSEL

7.7 How to save/restore a personal project

- From main dvddao (project window)



Push icon:  and select the correct option. If you don't know, then select "Default list

Import list (Select)
Import list (Defined)
Export list (Default name)
Export list (Defined)
Export list (Append)
Export list (Replace)
User request

Import a list using filemanager
Import a list "full name is known"
Export a list using CDRWSEL default naming convention
Export a list with a given full name
Export and append the list to an existing one
Export a list, erase older same name
User specific (coming ...)

- CDRWSEL request

If a list exist, at close time using bottom close button, CDRWSEL will ask you to save the list. If yes, the list is saved using CDRWSEL default name convention (generated name is displayed)

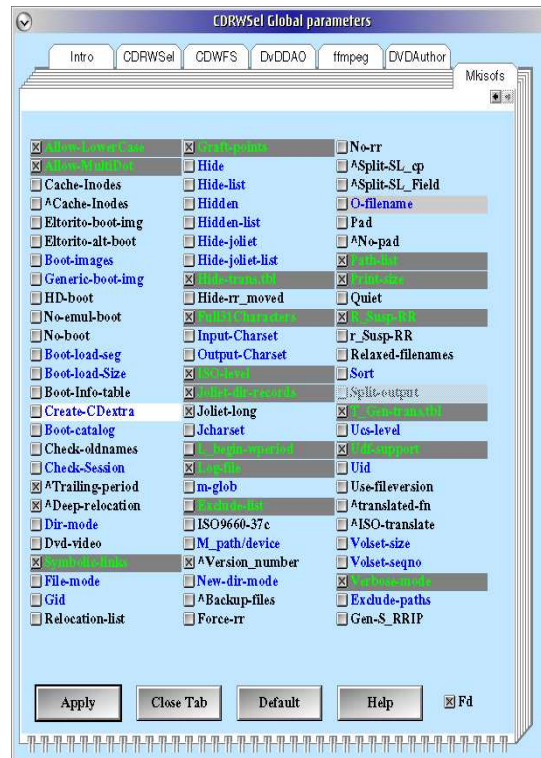
- Project list format

Generated list used as input to mkisofs can be used as project input to CDRWSEL. Here is a sample about resulting project list (when CDRWSEL is unable to determine if an entry into the list is a file or a folder, you'll have to answer to a popup message).

WELCOME TO GUI CDRWSEL

7.8 Mkisofs

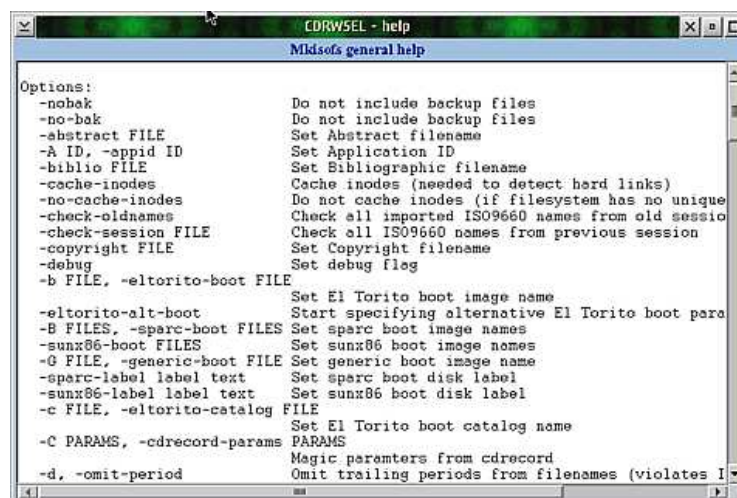
- Mkisofs parameters (Select [Settings] + [Icon] or [Setup] + [dvddao] + [expert only])



Click on help to get mkisofs2 help information. If you are not an expert using mkisofs, don't change existing parameters. Parameters which can be specified through an optional file aren't listed under this dialog. Current setting should be ok for most utilization (^ must be interpreted as NO). Graft-points option should be enabled with new mkisofs. Be sure to have Udf-support selected or the burned DVD is unreadable under OS/2. For BD-RE, Udf can be switched to CDFS under format popup dialog.

Mkisofs(2) help view follow :

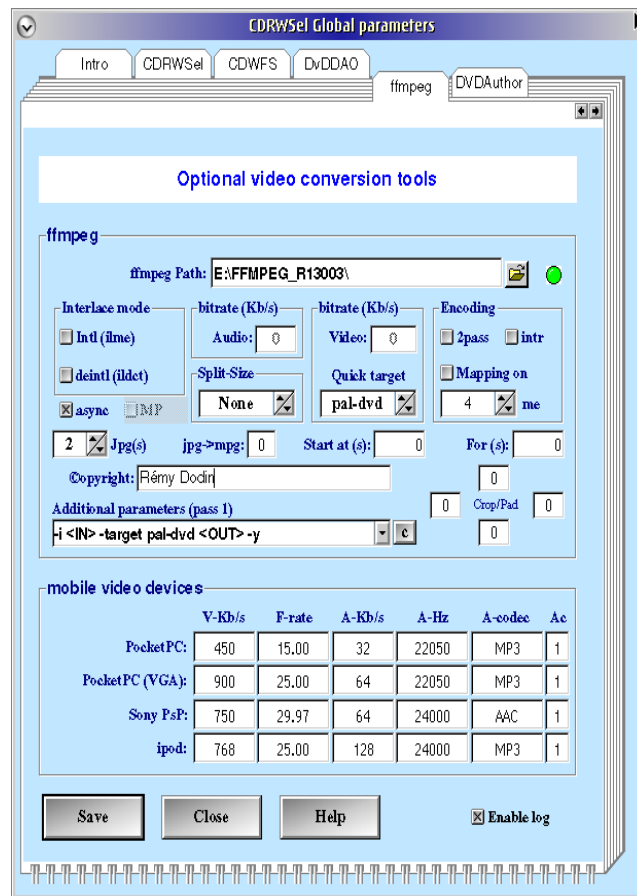
[Default] button allow you a choice between 2 modes, select the one you may need.



Note : Set [Fd] under mkisofs parameters (expert) on if you use a newer MKISOFS2 version as suggested

WELCOME TO GUI CDRWSEL

7.9 CDRWSEL ffmpeg



Specify correct path to ffmpeg. Use default options which looks to work well in most cases (tested on *.avi, *.ts and *.mpg files). In case of ffmpeg 2 pass option, use the drop down menu.

If you are not an expert about ffmpeg, don't try to change settings like it is at initialization time except for the 2nd pass parm (click on drop down menu of Additional parameters (pass)). select second option (it will force video output to 4:3 format. Click on [c] and change this option to blank. Click on main window to release focus of entry field and validate the update.

To reset ffmpeg parameters, select entry and click on [c] to change value. Enter blank to take default parameters. Following parameters are only used and converted by CDRWSEL:

<IN> is used to take selected file under filemanager and follow -i parameter. Any other string is used as input filename

<OUT> is used to auto generate the output file (part of input file name). Any other string is used as output filename

quicktarget option to change -target pal-dvd to an other default format e.g. -target ntsc-dvd
This option auto updates "additional parameters field"

Mapping on enables prompt for video/audio mapping parameters during process time
e.g. -map 0:0 . Mapping is always used when quick video conversion is used (convert->...). Auto detection is done for the video track and audio track ids.

WELCOME TO GUI CDRWSEL

Video bitrate	set this value if you do other kind of video conversion from the ones listed e.g. AVI with a very high video resolution (this option is only used when you enable ffmpeg option under drop down menu and do a drag/drop into project container.
Audio bitrate	set this value if you do other kind of video conversion from the ones listed e.g. AVI with a very high audio resolution (this option is only used when you enable ffmpeg option under drop down menu and do a drag/drop into project container.
async	If checked, audio is synchronized every 2 seconds with the video. Use this option if you have big problem to get audio synchronized with the video all the time during the film (this is often the case). Else audio syncro is always performed at start of the video (-async 1)
MP	this option is disabled and may be used as soon as OS2THREAD option is added into ffmpeg to use multi thread process.
Jpg(s)	Specify in seconds the picture into the video to take as thumbnail. This option is always used when using quick conversion option (convert->...) which auto generates 2 thumbnail with 2 different format (normal and small).
Jpg->mpg	Specify the number of image loop for the generated video (15 = 1s)
Video bitrate	set this value if you do other kind of video conversion from the ones listed e.g. AVI with a very high resolution (this option is only used when you enable ffmpeg option under drop down menu and do a drag/drop into project container.
©	Add a copyright information into the video file (only available when using quick video conversion)
start at (s)	Specify in seconds start of the movie part to convert (video before this time is cut)
for (s)	Specify in seconds the length of the movie to convert (do not specify this value if you can't get the original video duration or you don't know video length)
crop/pad	Cropping: specify a positive even number of pixels to be removed on left, right, top and bottom (use only even numbers and final format should be near original format to prevent video distortions - use a rounded even number for the format) (e.g. transform a 4:3 video format for 16:9 movie into a real 16:9 video format without the 2 black bands. It can be used to adjust video center etc...) Padding : specify a negative even number of pixels (the minus sign is used to specify padding). The number of specified pixels are been added to the video in black color <i>(e.g. transform a 16:9 format video to a 4:3 video format. for a 320x240 video, set left and right to " -52 " and use " force 4:3 " video option)</i>

ffmpeg mobile video devices:

Here are default setting for specific mobile video devices, you can change value but the one given are well for specified devices. Be carefull, some options aren't supported with OS/2 ffmpeg compilation

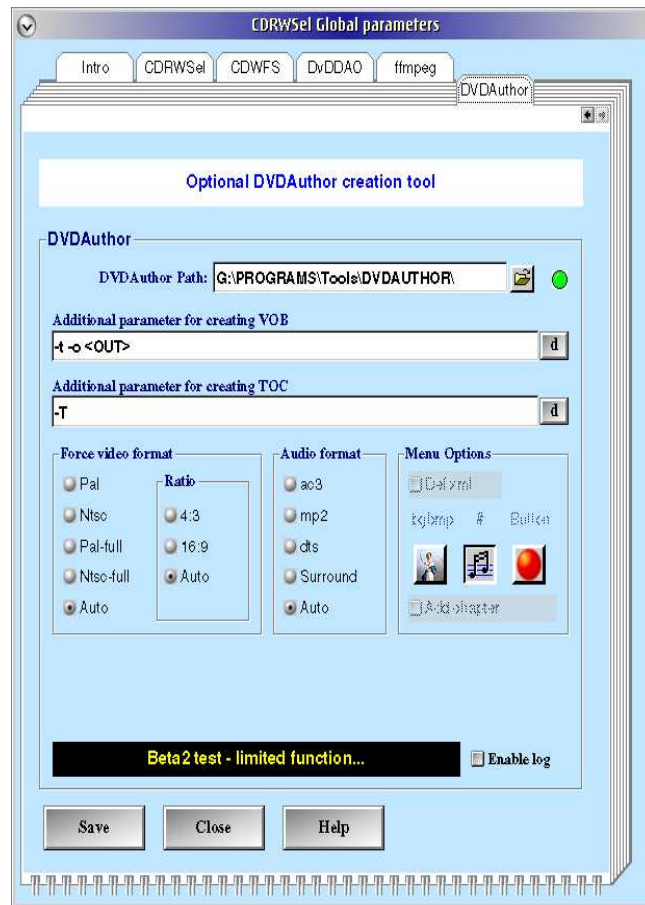
Current quick format options:

- Pocket PC
- Pocket PC (VGA)
- Sony PsP
- iPod
- Flash (flv) This option isn't specified here because it uses V kb/s from Pocket PC. Changing this pocket PC value changes Flash options too. Same for HQ flash (2 time V kb/s + 25 fps)

When doing *.VOB to *.AVI ripping, only video and audio bitrates can be changed using value from this ffmpeg parameter dialog

WELCOME TO GUI CDRWSEL

7.10 CDRWSEL DVDAUTHOR



DVDAuthor parameters:

only minimum required parameters are defined here because this tool is only used to create corresponding DVD files and not to use full function provide by this nice tool.

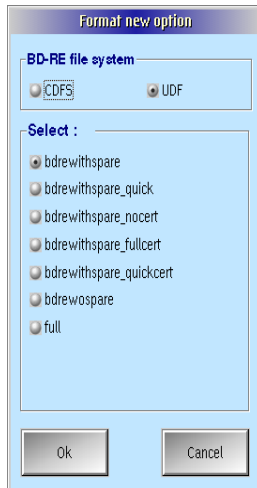
- **Force Video Format** (may be needed on some video files without Video info)
- **Ratio** (may be needed on some video files to adjust output result)
- **Audio Format** (may be used on some video having incorrect audio format)
- **Menu Option** (Not enabled due it isn't implemented yet. It is planned to configure a default minimum Video Menu with background image and Menu button to list chapter)
- **Enable log** (write log file for DVDAuthor, this may create hung if DVDAuthor goes into a message flowing due to process errors. If this happens, uncheck this option)

WELCOME TO GUI CDRWSEL

7.11 Burning a data BD-RE

BD-RE is a re-writable media. At BD-RE load time, format option is disabled due to no need to format the BD-RE because data's are overwritten. If the inserted media had datas on it, a popup message will appear to prevent about existing datas on the media and that used size is reset to 0 to allow a new burn process.

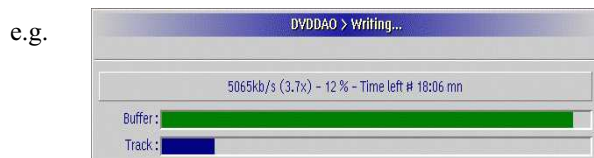
If you enable the format option, a list of available format and CDFS/UDF selection popup menu appears



Format bdrewithspare or bdrewithspare_quick give a good result. bdrewospare is an other well option. To get a full BD-RE format which is very long to end, you can use the bdrewithspare_fullcert. Existing full option does a quick format and not a full format like fullcert does.

Both CDFS and UDF give a correct result and readable data BD-RE. With UDF, you must be sure to have UDF support under the system where this BD-RE may be read. To suppress the format option, reply cancel and disable format button option. Video BD do not work.

Proceed like for a data DVD, build your project, have mkisofs enabled (the default) and then click on the [Burn] button. Progress bar appears with information about formatting progress (if needed), and current speed as well as throuput in kb/s and a calculated time left until end of current process indicated into the progress bar title.



Buffer indicates the amount of datas are available into the buffer. It should be high enough to prevent drive build in burn protection mode. Track indicates the % of datas currently burned on the media.

8 / Video conversion

8.1 Starting CDRWSEL for video conversion only

Add parameter **-FM** to CDRWSEL when starting or create a special icon on your desktop with this additional parameter. CDRWSEL will then open as filemanager instead of full function.

Navigate to your video (supported codec by ffmpeg os/2). Select the file (files) to be converted. Using the quick conversion option like flash (FLV), avi (PDA), avi (VGA PDA) etc... ffmpeg process is colled uses default format settings defined under ffmpeg parameters. Some other parameters are added by default and can be changed like 2 pass process forced for a better video quality.

Through these quick video conversion options, after converting the video file into an other format, 2 thumbnail images of the video are created taken a few seconds from the beginning of the video (this is a forced option because the normal and small thumbnails have a small size and may be very usefull).